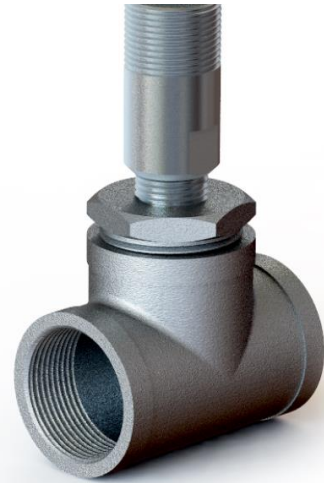


Properties

Body Shape	Cylindrical
Body Material	Brass (Nickel Plated)
Wetted Part Material	304 Stainless Steel
Connection	PVC Cable
Conduit Entry	3/4" NPT
Contact Arrangement	DPCO / DPDT (2x Form C)
Certification	General Purpose
Hazardous Location	n/a
Gas Group	n/a
Dust Group	n/a
Temperature Class (T)	n/a
Rating) Environmental	IP 66, 67 & 68 / NEMA 4, 4X, 6, 6P
Protection Actuation (Rising flow)	10.0 - 11.4 l/min (2.6 - 3.0 USgpm)
Deactivation (Falling Flow)	5.0 - 6.0 l/min (1.3 - 1.6 USgpm)
Process Connection	1 1/4" BSPT
Supplied with Tee	Supplied with 1-1/4" BSPT equal Tee SS316
Maximum Working Pressure	138bar / 2000psi
Operating Temperature	-20°C to +80°C / -4°F to +176°F



Ratings

Supply Voltage	Max switching Current	Max Voltage
24 VDC 110/120 VAC 230/240 VAC	4A (24A in-rush)	240 VAC

Connection