



# model MK8A

Freeze-protection Bury Valve

## FEATURES & BENEFITS

---

## OPTIONS

---

For more information, visit [www.hawesco.com](http://www.hawesco.com) or call (888) 640-4297.



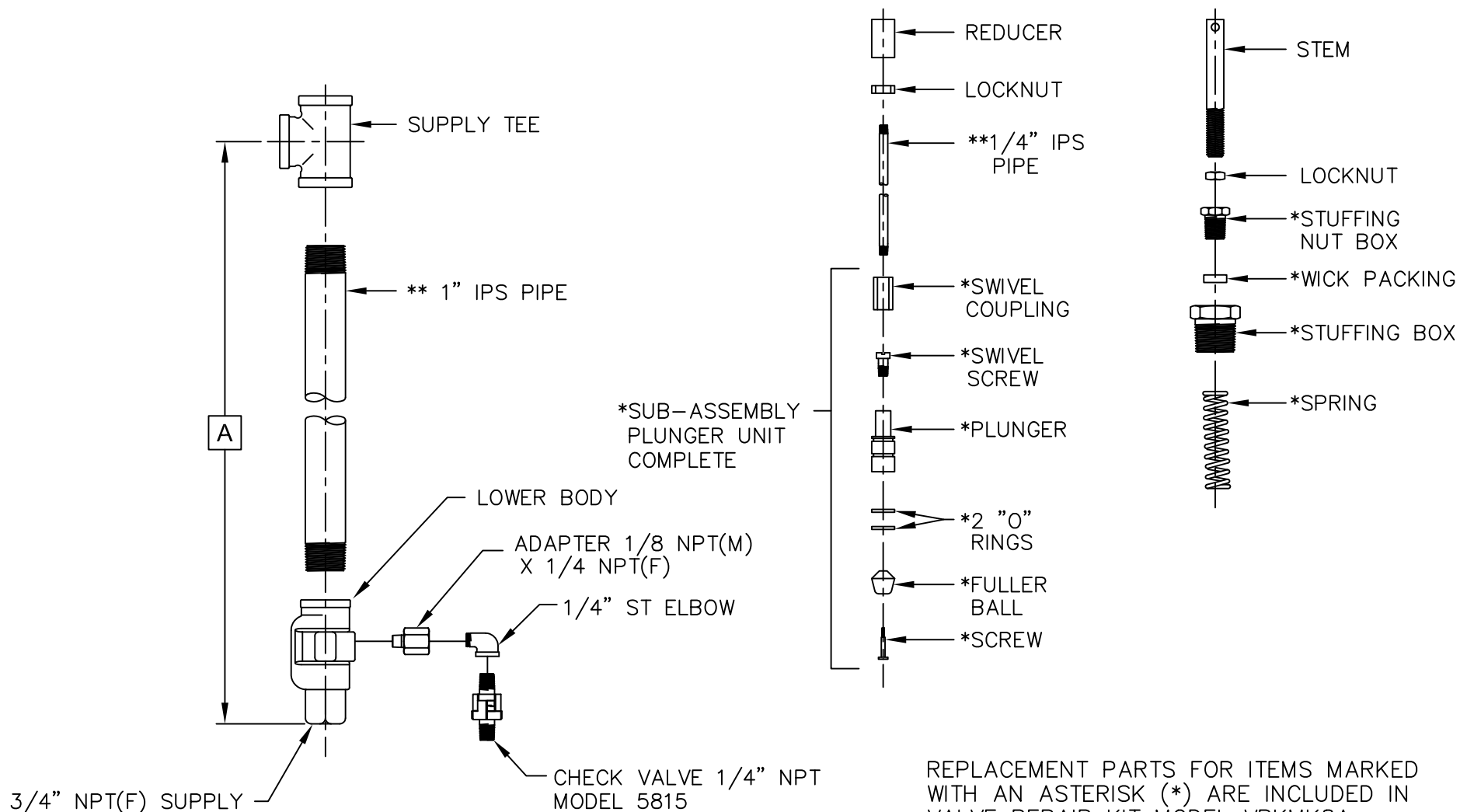
## SPECIFICATIONS

---

Model MK8A is a special freeze-protected valve that drains water from Model 8300FP combination shower/eyewash after closing to prevent freezing. 3/4" NPT inlet. Standard sizes are 60" and 78" (152.4 and 198.1 cm) for bury depths of 24" and 42" (61 and 106.7 cm) respectively. Servicing Instructions: For replacement of damaged parts, order the VRKMK8A repair kit which includes packing, stuffing box, stuffing box nut, spring and plunger assembly with four O-rings.

## APPLICATIONS

---



REPLACEMENT PARTS FOR ITEMS MARKED WITH AN ASTERISK (\*) ARE INCLUDED IN VALVE REPAIR KIT MODEL VRKMK8A AVAILABLE FROM HAWS.

\*\* SPECIFY BURY DEPTH WHEN ORDERING THESE PARTS

A	FOR BURY DEPTH
60"	24"
78"	42"

		1455 KLEPPE LANE SPARKS, NEVADA 89431 (775) 359-4712 FAX (775) 359-7424 E-MAIL: HAWS@HAWS.CO.COM WEBSITE: WWW.HAWS.CO.COM	
		ECN NO. REVISED PER BY: MODEL(S) ECN: 4561 VWC: MK8A FREEZE PROOF VALVE	PART NUMBER: 0002080286.D
DRAWN: C.H. APPROVED:	DATE: 09/90 DATE:	CHKD.: DATE:	REV. 10
SCALE: 1:5		DRAWING TYPE: INSTALLATION	SIZE: A SHEET 1 OF 1