

READY WHEN YOU ARE.

Have confidence in your local area monitoring

Honeywell BW™ RigRat



Honeywell

TRANSPORTABLE AREA MONITORING HAS NEVER BEEN THIS EASY.

Honeywell BW™ RigRat brings a new level of user-friendliness to transportable multi-gas area monitoring. Simply place the monitor nearby, and it will alert workers to area gas threats so they can take necessary action.

UP TO 8 WEEKS OF RUNTIME ON A SINGLE CHARGE.

Honeywell BW™ RigRat has longer runtime than any monitor in its class. That means:

- No time-consuming battery switches in the middle of a task.
- No need to turn it off during a shift change or worker break.
- No worrying about battery life.

Up to six gas sensors — with flexibility to switch them out as your needs change.

Choose from:

- More than 15 4R+ sensors for toxic gases, oxygen and combustible gases at the lower explosive limit (LEL).
- A photoionization detector (PID) for volatile organic compounds.
- Infrared sensors for highly flammable gases.

Complements your personal gas detectors, protecting workers wherever they're at risk. Unlike some transportable area monitors, Honeywell BW™ RigRat is fully self-contained — with no need to re-purpose your personal gas detectors for an area monitoring application. Instead, continue using your personal detectors to monitor workers' breathing zone, while using Honeywell BW™ RigRat to monitor an area.

HONEYWELL BW™ RIGRAT FOR VITAL PROTECTION DURING:

- Zone declassification
- Turnarounds
- Confined space tasks
- Routine maintenance
- Fence line
- And other operations — indoors or out, even in extreme conditions



Grab and go. Like other Honeywell BW products, Honeywell BW™ RigRat is engineered for ease, with one-button operation. Simply turn it on and it's ready to deploy — no expertise required. Convenient handles and a carrying strap make it easy to take with you.

EFFICIENTLY PREPARE AREAS FOR SAFE, COMPLIANT WORK. HONEYWELL BW™ RIGRAT MAKES IT EASY TO EXECUTE YOUR SAFETY PROCEDURES – BEFORE A PROJECT AND THROUGHOUT.

Need to declassify an area for hot works? Position a few Honeywell BW™ RigRats (as a part of your zone declassification SOP) to monitor for dangerous gas, and as soon as they illuminate green, you have a perimeter for safe work.

Do you have lone workers who need area monitors? Put a Honeywell BW™ RigRat on their truck as a reliable companion.

Alarms that are easy to see and hear.

See status at a glance with LEDs that turn red in alarm and green when the area is safe. And a 108-decibel alarm ensures that when there's danger, workers will know it – even in noisy environments.

Intelligent alarm for inert mode. Need to monitor oxygen in an inert application? Put Honeywell BW™ RigRat into inert mode, and it will not alarm in normal ambient air. So you can set up your project without annoying alarms.

Available with pump. Use the optional pump for remote sampling.

Easy-to-read display – even in cold weather.

Thanks to a large screen that's tilted back, you don't need to duck to read it. A shield keeps it visible in rain and snow, while a transparent cover protects it from dirt and other particles.

Simple setup with a smart phone. No configuration software to install and learn. Instead, use Honeywell's Device Configurator app to set up the monitor, choose alarm set points and more – all from up to 5 meters away. Also use the app to check calibration data, email calibration certificates and upgrade firmware.



CONQUER YOUR CLUTTER WITH A SMART CONSOLE FOR STORAGE AND CHARGING

Say goodbye to disorganized monitors in your workshop or equipment cage. Instead, use Honeywell's modular system to store and charge your Honeywell BW™ RigRats until they're assigned to a job. Easily see which monitors are fully charged and ready to go. Reduce clutter with a single power cord for the entire storage rack.

RELY ON HONEYWELL BW™ RIGRAT FOR ASSURANCE

Honeywell BW™ RigRat stands up to harsh elements, going where you go and watching your back.



- **Approved for ATEX/IECEX Zone 0 and CSA C1D1.** Use Honeywell BW™ RigRat anywhere — even in explosive atmospheres.
- **Line power for extended runtime in hazardous areas.** Honeywell BW™ RigRat has one of the longest runtimes of any transportable area monitor, but you can also use the intrinsically safe portable charger to extend power in the field.
- **Rugged, sturdy and weatherproof.** Working in uncertain conditions? Honeywell BW™ RigRat can be secured to the ground, and it maintains sensitivity in sun, ice, snow, rain and temperatures from -40°C to 60°C. Add the optional protective cage to guard against impact.
- **Optional SolarPak charger.** Want continuous power for a long outdoor deployment? Attach the hazardous-area SolarPak charger, which uses a 30-watt solar panel.



SolarPak Charger (optional)

For more situational awareness, configure Honeywell BW™ RigRat for wireless applications — without the wireless complexity.

CONNECT TO FORM A WIRELESS SAFETY PERIMETER.

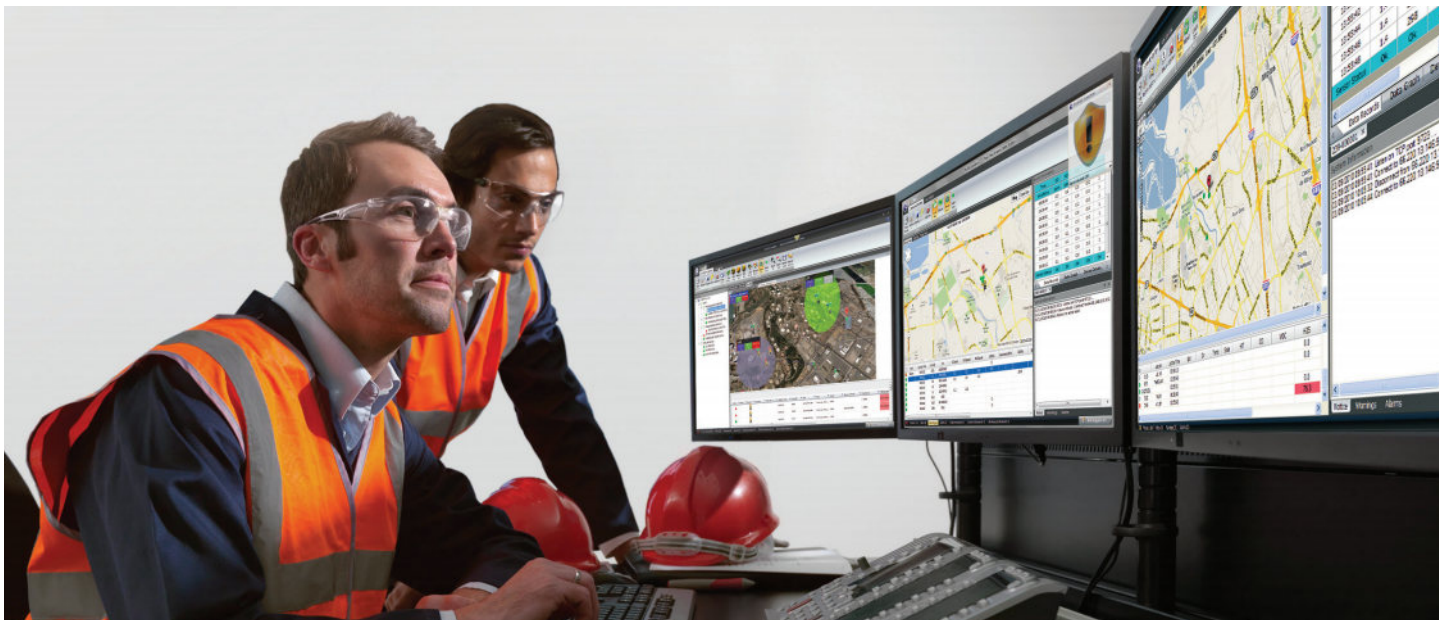
As part of Honeywell's Connected Worker portfolio, Honeywell BW™ RigRat simplifies your daily challenges in safety, compliance and productivity.

Want to monitor a large area with high-risk work? Create a safety perimeter around a tank or pipe? Simply position several Honeywell BW™ RigRat monitors to form a wireless chain.

- **Instant threat awareness.** When one monitor alarms, they all alarm, notifying workers of a gas leak in the area so they can stop working or evacuate.
- **No broken chains.** Need to remove a monitor from the chain? Have no fear that one missing link will take down the rest. Instead, if you remove one Honeywell BW™ RigRat, the rest of the chain continues operating as normal.
- **Wireless assistant for easy setup and troubleshooting.** How strong is the wireless connection between your monitors? Simply navigate to the Wireless Assistant screen to see the signal strength for each monitor, so you can reposition monitors as needed.



WIRELESS APPLICATIONS



CONNECT TO REMOTE MONITORING SOFTWARE FOR FAST, INFORMED DECISIONS.

When you use Honeywell BW™ RigRat with Honeywell's remote monitoring software, gas readings are no longer limited to workers in the immediate area. Instead, the data from each monitor — including its location, gas readings, calibration certificates, compliance status and more — is sent to a map-based display that's viewable from any device with an Internet connection.

- **Real-time visibility.** Know what's happening in an area, in the second it's happening, so you can manage your operations, correct a small problem before it becomes a crisis, or simply provide workers with assurance that you're monitoring their safety.
- **Automate administration to reduce time.** Use the software for at-a-glance visibility on each monitor's compliance with safety policies. No need to manually track calibrations or personally investigate every alarm.
- **Optional integrated noise sensor.** Honeywell BW™ RigRat is the first transportable area monitor with a built-in sensor for background noise. View the readings in the software, so you can determine the right kind of hearing protection for workers in different areas.
- **Optional meteorological sensor for tracking toxic plumes.** Need to predict the spread of a gas leak and prioritize your actions? Attach a RAEMet sensor to Honeywell BW™ RigRat to measure wind speed and direction, along with temperature and relative humidity — all viewable in the software.





CONNECT TO THE TOUCHPOINT PLUS CONTROLLER FOR VISIBILITY ON AREA MONITORS AND PERSONAL DETECTORS.

Everything about Honeywell BW™ RigRat is easy, and that includes control. Use it with Honeywell's Touchpoint™ Plus, a touchscreen wireless controller for up to 72 channels of gas detection.

- **Take control.** See the gas readings of all your Honeywell BW™ RigRat monitors, and program outputs such as lights, horns, fans or shutdowns.
- **No cables.** Since Touchpoint Plus is wireless, it's easy to connect — with no damage-prone cables that take days to install.
- **Integrate area monitors and personal detectors.** Do you have a team of workers using Honeywell BW™ RigRats along with wireless personal gas detectors? Use the Honeywell BW™ RigRat as a hub that connects them to the controller. So if a personal detector goes into alarm, you will know it with centralized control.



