

# Tech Sheet International – Branston MocToe ESD

Alloy Toe Steel Plate



## Features:

- Premium oiled nubuck leather for comfort and abrasion resistance
- Alloy safety toe for lightweight protection
- Non-metallic fiberglass shank for structural support
- Padded top collar for comfort
- Cement construction for flexibility and reduced break-in time
- Antimicrobial treatment for odor control and comfort
- Metallic puncture-resistant plate for flexible underfoot protection



**A11X1** Alloy Toe  
Brown Oiled Nubuck Leather  
5-12,13,14,15W

## Dual-Density Polyurethane Outsole:

- Slip Resistant
- Oil Resistant
- Non-marking
- Abrasion

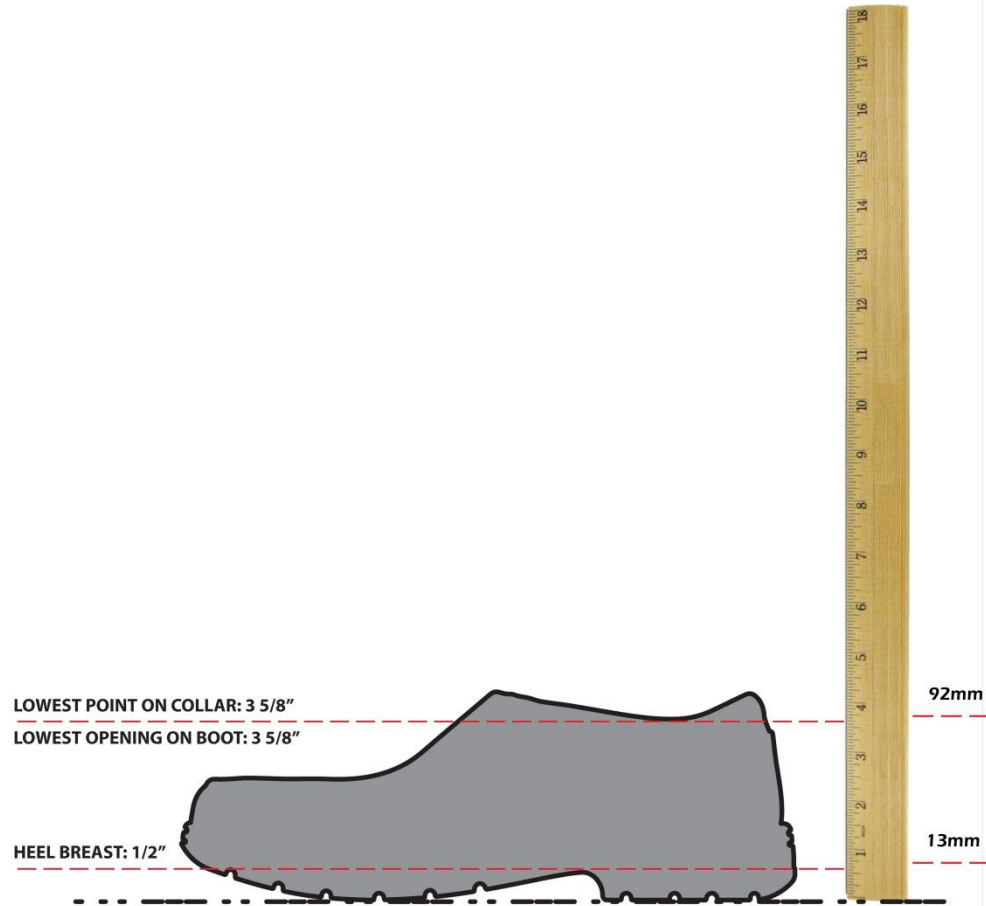
## Dynamic Anti-Fatigue Technology Polyurethane Footbed:

- Dynamic Anti-Fatigue Technology Durable-resists compression set over time
- Resilient-recovers for next foot strike
- Monosided inverted Anti-Fatigue cones
- Contoured bio-mechanically engineered top surface helps maintain proper gait
- Dynamic arch adapts to different foot shapes for maximum comfort
- Moisture wicking breathable open cell PU

# Tech Sheet International – Branston ESD A11X1

Alloy Toe Steel Plate

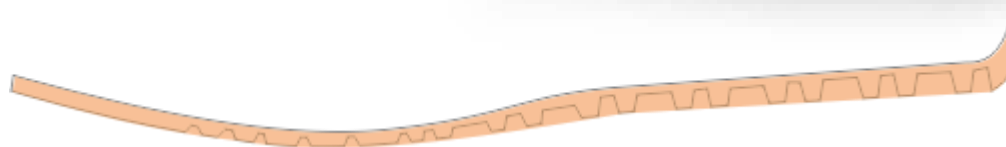
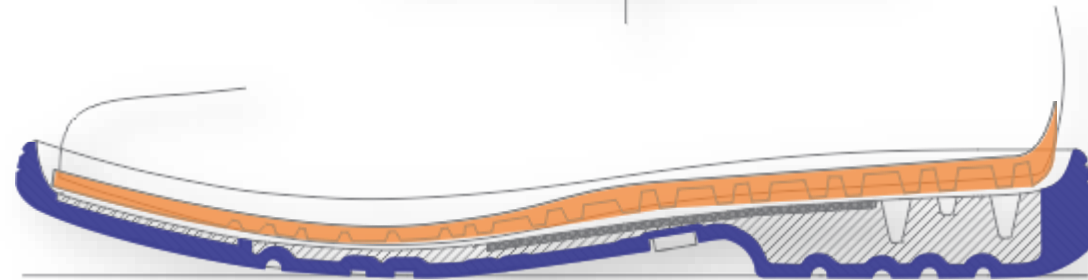
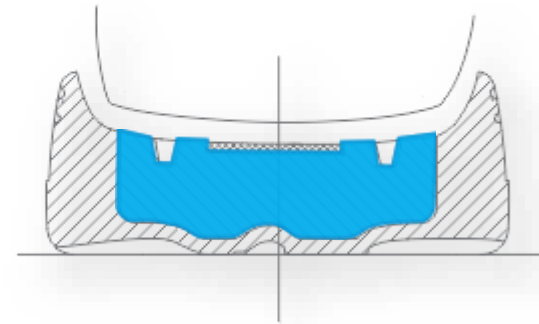
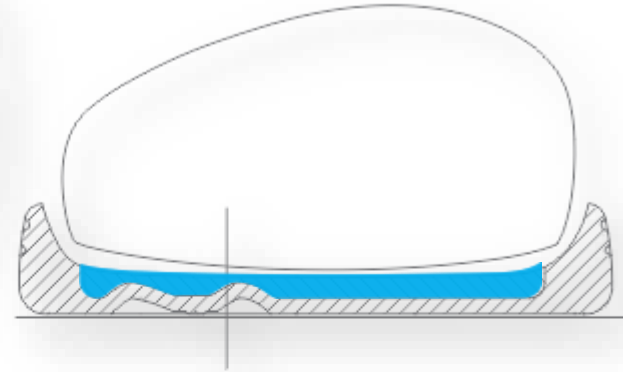
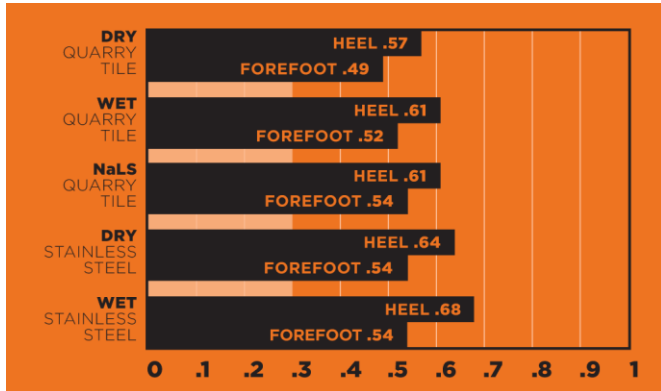
**BRANSTON SLIP ON**  
\*\*\* All measurements are external\*\*\*



# Tech Sheet International – Branston Moc Toe ESD A11X1

Alloy Toe Steel Plate

## Slip Scores



## Outsole Compound and Midsole:

- Dual Density Polyurethane Outsole
- ESD

## Footbed:



**Tech Sheet International – Branston Moc Toe ESD A11X1**  
Alloy Toe Steel Plate

**Alloy Toe**

