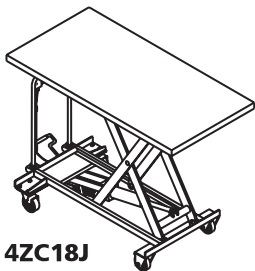


Please read and save these instructions. Read carefully before attempting to assemble, install, operate or maintain the product described. Protect yourself and others by observing all safety information. Failure to comply with instructions could result in personal injury and/or property damage! Retain instructions for future reference.

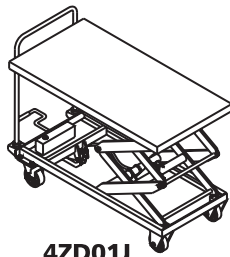
Dayton® Hydraulic Elevating Carts

Description

Portable ergonomic elevating carts minimize worker bending and lifting. Materials can be easily loaded onto platform of cart, lowered to safe transporting height, and raised to unload at destination. Moves easily on four polyurethane casters, two swivel with brake and two rigid. All models feature a down speed control valve, all steel construction, and powder-coated red finish with chrome-plated handles.



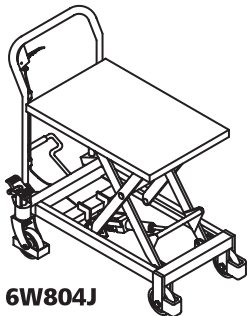
4ZC18J



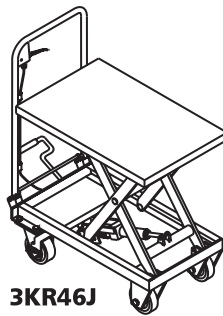
4ZD01J



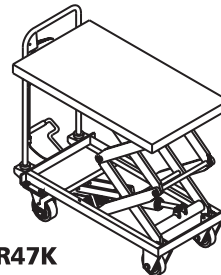
6W803J



6W804J



3KR46J



3KR47K

Unpacking

After receiving a hydraulic elevating cart, visually inspect the frame components and hydraulic unit for damage. If damage is evident, notify delivering carrier immediately and file necessary claims.

Specifications and Dimensions

Load Capacity (lbs.)	Platform Width (in.)	Platform Length (in.)	Lowered Height (in.)	Raised Height (in.)	Grainger Number	Weight (lbs.)
400	17 ⁵ / ₈	27 ¹ / ₂	8 ³ / ₄	29 ¹ / ₄	3KR46J	96
800	20	35 ¹ / ₂	13 ³ / ₄	51	3KR47K	242
1,000	20	32	11	35 ³ / ₈	6W803J	185
1,000	31 ¹ / ₂	63	12 ¹ / ₄	35 ³ / ₈	4ZC18J	288
1,500	24	48	18 ⁵ / ₈	59	4ZD01J	402
2,000	20 ⁵ / ₁₆	40	15	39 ¹ / ₄	6W804J	251

General Safety Information

1. Not a personnel lift. Keep clear when operating.
2. Never go under platform if there is weight on the unit.
3. Remove weight before working on unit.
4. Do not change pressure relief valve setting.
5. Do not clamp cylinder in a vise as you may distort barrel.
6. Never operate lift unless you are watching it.
7. Load lift as uniformly as possible.
8. Do not continue to pump if unit is not raising.
9. Relieve system pressure by slowly operating pressure release mechanism.
10. Do not use brake fluids or jack oils. Use AW-32 grade hydraulic oil or Grainger No. 4ZF32 hydraulic oil.

Assembly

(3KR46J)

TOOLS REQUIRED: Adjustable Wrench

After unpacking cart, locate foot pedal (L shaped) and the installation bolt. Slide the foot pedal in the pedal bracket located below the frame of the cart on

Dayton® Hydraulic Elevating Carts

Assembly (Continued)

the same end as the handle. Align the bolt hole on the left side and install the bolt lock washer and nut. At this time tighten the bolt. Lift the handle to the upright position assuring that it latches into position with the handle latch bar located just above the foot pedal. At this time your cart is ready for use.

(3KR47K, 6W803J & 6W804J)

TOOLS REQUIRED: Adjustable wrench and metric Allen wrench set

After unpacking cart, locate foot pedal, handle, and bolts. Align holes in bottom of handle with handle mounting brackets and install bolts in handle. It is important not to kink the cable on the left side as that will cause the release mechanism to fail. Tighten the two handle bolts using adjustable wrench. At this time locate the foot pedal. This will install on the same end of the cart as the handle. Just below the frame you will find a bracket for this to slip into. Line up the bolt hole, install the bolt nut and washers and tighten it. At this time your cart is ready to use.

ADJUSTMENTS FOR LEVEL LOWERING

MECHANISM: From time to time small adjustments may be necessary to keep your cart performing at its best. To adjust the lowering cable there are two places to perform this adjustment. The first step is to raise the cart top to access the cylinder. Then if a small adjustment is needed, locate the bottom of the hydraulic cylinder, and locate the release lever. In the center of this lever there is an adjustment screw and a lock nut. Insert the correct size Allen wrench into screw head and with

wrench loosen the jam nut. At this time turn the screw clockwise until the unit starts to lower, then back the screw off 1/2 turn and retighten the lock nut. If a major adjustment is needed then you will need to locate the cable retention assembly. This is on the release lever. Once nut is loose the lever should drop down a little bit. You will need to raise the lever to a point just before the cart starts to lower, pull the cable downward to tighten it, and tighten the jam nut. After a coarse adjustment a fine tuning adjustment may be necessary.

(4ZC18J)

TOOLS REQUIRED: Adjustable wrench, small regular screwdriver

After unpacking the cart, locate handle and foot lever. To install the handle on the cart place the handle on the mounting brackets with the release lever and linkage on the right side. Install bolts in bottom of handle and tighten them. Locate foot pedal and install it in the pedal bracket on the same end of the cart. Line up bolt holes, install and tighten foot pedal bolt. Raise platform by pumping foot pedal. This will allow you to access the linkage you need to hook up the lowering knob. Locate linkage coming from pump. This should be protruding from the back of the frame. Locate the spring tension holes just under the lowering knob and install one end of the spring in this hole. The other end of the spring will go into a hole in the bottom of the release knob. On the lower end of the first linkage there will be a dimple in the shaft. This is for the set screw in the swivel joint to lock into. Turn the lowering

knob counterclockwise to put tension on the spring, until the dimple lines up with the set screw in the swivel joint. At this time tighten the set screw. Now you should be able to lower the deck by turning the lowering knob to the left. Your cart is ready to use at this time.

(4ZD01J)

TOOLS REQUIRED: Adjustable wrench

After unpacking the cart, locate handle and foot lever. To install the handle, line up bolt holes in handle with bolt holes in handle brackets on frame of cart, and install the bolts. At this time tighten bolts. Now install the foot lever in the bracket just below the frame on the handle end of the cart, line up the bolt holes and install and tighten the bolt. At this time the cart is ready for use.

Operation

The load capacity rating as inscribed on the nameplate of your unit designates the net capacity, assuming the load is centered. This capacity must never be exceeded, as permanent damage or injury may result.

Stay clear of moving parts. The platform will rise as long as the foot pedal is pumped. Operating the lowering mechanism will lower the table.

In the event the table is overloaded, the relief valve will open because of excessive pressure build up, and oil will bypass into the reservoir.

1. Always load the unit uniformly.
2. Never use the lift if it is in need of repairs or in the case of a malfunction.
3. Operate lowering mechanism slowly.

Models 3KR46J, 3KR47K, 6W803J, 6W804J, 4ZC18J & 4ZD01J

Operation (Continued)

AIR BLEED PROCEDURE (3KR46J, 3KR47K, 6W803J, 6W804J, 4ZC18J & 4ZD01J)

Whether pump is new or has been recently serviced, air has likely entered the hydraulic system. Use the following steps to remove air from the hydraulic system. Refer to the appropriate Repair Parts Illustration for table, lowering mechanism, and foot pedal identification.

1. Ensure table is in the lowered position.
2. Operate the lowering mechanism while simultaneously pumping the foot pedal several times slowly.
3. Repeat above procedure until "spongy" feel is no longer present. The feel of the foot pedal will be firm and the complete stroke of the pump will produce fluid flow.

Maintenance

All bushings and bearings are of the pre-lubricated type and will last for a long period of time without additional lubrication. To increase bearing life, it is recommended that a few drops of light machine oil be applied at each pivot point every 6 to 12 months.

DAILY

Visually check and do not use if any of the following are visible:

1. Oil leaks.
2. Structural deformation of legs or frame.
3. Unusual noise or binding.
4. Check casters for proper operation.

MONTHLY

1. Check for oil leaks.

2. Check clevis and pivot points for wear.
3. Check rollers for looseness and wear.
4. Check for unusual noise.
5. Make sure all warning labels are in place and in good condition.
6. Clean off dirt and debris.

YEARLY

Hydraulic oil should be changed at least once a year, or sooner if the oil darkens or becomes gritty. Flush reservoir before refilling. Presence of water is indicated if the oil turns milky. Recommended oil: AW-32 grade hydraulic oil or Grainger No. 4ZF32 hydraulic oil or equal.

All maintenance work must be performed by qualified personnel with training in the repair of hydraulic components.

NOTE: If hydraulic oil is milky white in color, water is in the hydraulic system. Change the hydraulic oil immediately.

TO FILL UNIT WITH OIL (REFER TO FIGURE 1)

1. Raise the platform and block the leg assembly in the fully raised position.
2. Remove the upper cylinder pin.
3. Loosen the set screw in the lowering lever linkage.
4. Release the lowering valve.
5. Collapse the cylinder rod back inside the cylinder.
6. Remove the oil fill plug.
7. With the cylinder horizontal, fill with AW-32 grade hydraulic oil or Grainger No. 4ZF32 hydraulic oil or equal.
8. Reinstall the fill plug, and then reinstall the cylinder.

TO FILL WITH OIL — LOW OIL CONDITION

1. Raise the unit as far as it will go.
2. Remove the oil fill plug.
3. Add oil 1 oz. at a time.
4. Pump the foot control.
5. Repeat steps 3 and 4 until the unit's maximum height is achieved.
6. Once the maximum height is reached, add 1 oz. of oil and reinstall the fill plug.

IF CART LEAKS DOWN

1. Completely lower the platform. By hand, grasp the deck at the hinge end of the leg assembly. Raise the deck as high as possible, then carefully, while standing aside, allow the assembly to drop. This procedure draws oil through the load holding check valve and "washes" debris (if present) from the ball and seat of the device. It may be necessary to repeat this procedure a couple of times to remove all debris from the check valve thus, eliminating table drift.
2. Check the oil level in the pump assembly. The oil should be level with the bottom of the hole with the scissor legs in the lowered position. (Deck tilts up.)

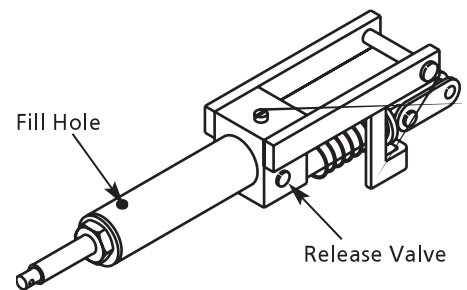


Figure 1 – How to Add Oil

E
N
G
L
I
S
H

For Repair Parts, call 1-800-323-0620

24 hours a day – 365 days a year

Please provide following information:

- Model number
- Serial number (if any)
- Part description and number as shown in parts list

Address parts correspondence to:

Grainger Parts
P.O. Box 3074
1657 Shermer Road
Northbrook, IL 60065-3074 U.S.A.

ENGLISH

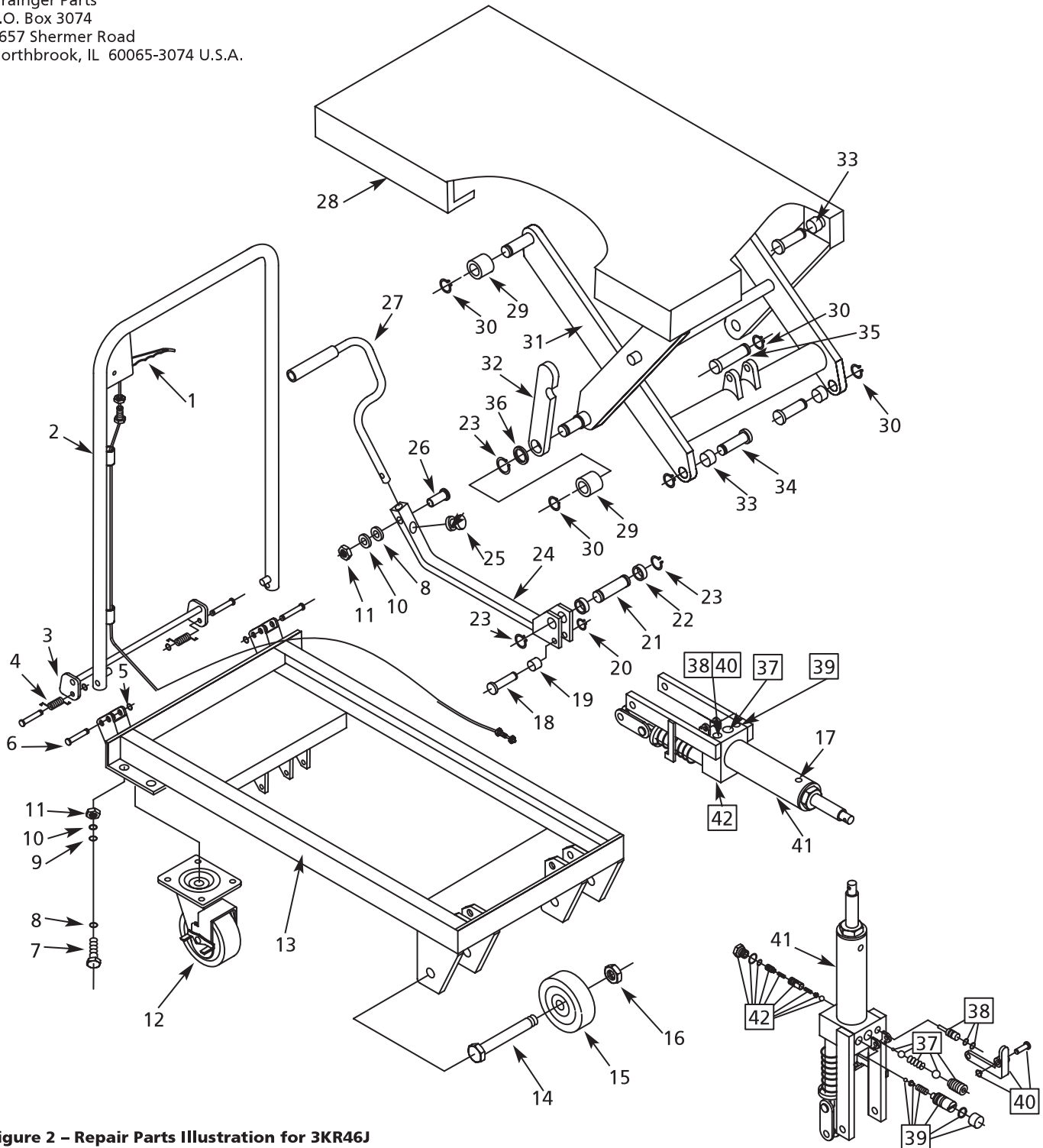


Figure 2 – Repair Parts Illustration for 3KR46J

Model 3KR46J

Repair Parts List for 3KR46J

Ref. No.	Description	Part No.	Qty.	Ref. No.	Description	Part No.	Qty.
1	Lowering Lever and Cable Assembly	46-1A	1	22	Washer	46-22A	2
2	Handle bar	46-2A	1	23	Retaining ring D-16	*	4
3	Handle return	46-3	1	24	Pump arm	46-24	1
4	Spring	46-4	2	25	Bumper	46-25	1
5	Retaining ring	46-5	2	26	Bolt M-8X32	*	1
6	Pin	46-6	2	27	Foot pedal	46-27	1
7	Bolt M-8X22	*	8	28	Table	46-28	1
8	Washer D-8	*	9	29	Roller	46-29	4
9	Washer D-8	*	8	30	Retaining ring D-12	*	9
10	Lock washer D-8	*	9	31	Arm assembly	46-31	1
11	Nut M-8	*	9	32	Stop arm	46-32A	2
12	Caster wheel	46-12	2	33	Bushing	46-33	4
13	Frame	46-13	1	34	Pin	46-34	4
14	Shaft M-8X60	*	2	35	Pin	46-35	1
15	Wheel	46-15	2	36	Bushing	46-36	2
16	Retaining ring M-8	*	2	37	Flow valve kit	46-37A	1
17	Fill Plug	46-17	1	38	Release valve kit	46-38A	1
18	Pin	46-18	1	39	Pressure relief valve kit	46-39	1
19	Roller	46-19	1	40	Release lever kit	46-40A	1
20	Retaining ring D-10	*	1	41	Pump/cylinder unit	46-41A	1
21	Pin	46-21	1	42	Speed control valve kit	46-42	1

(* Standard hardware item available locally.

For Repair Parts, call 1-800-323-0620

24 hours a day – 365 days a year

Please provide following information:

- Model number
- Serial number (if any)
- Part description and number as shown in parts list

Address parts correspondence to:

Grainger Parts
P.O. Box 3074
1657 Shermer Road
Northbrook, IL 60065-3074 U.S.A.

ENGLISH

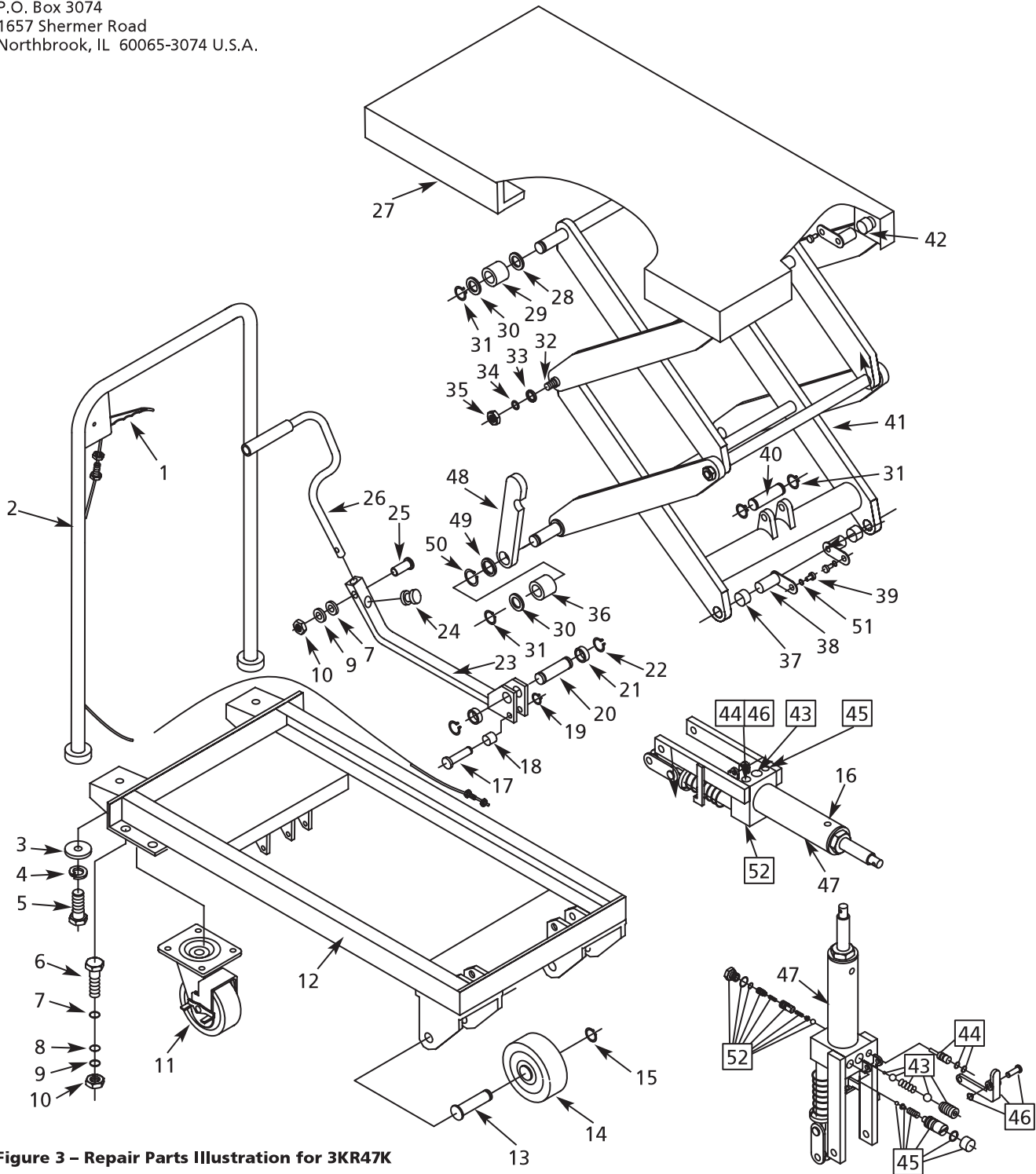


Figure 3 – Repair Parts Illustration for 3KR47K

Model 3KR47K

Repair Parts List for 3KR47K

Ref. No.	Description	Part No.	Qty.	Ref. No.	Description	Part No.	Qty.
1	Lowering Lever and Cable Assembly	47-1A	1	27	Table	47-27	1
2	Handle bar	47-2A	1	28	Washer	47-28	2
3	Washer	47-3	2	29	Roller	47-29	2
4	Washer D-12	*	2	30	Washer	47-30	4
5	Bolt M-12X30	*	2	31	Retaining ring D-16	*	6
6	Bolt M-8X22	*	8	32	Shaft	47-32	2
7	Washer D-8	*	9	33	Washer D-16	*	4
8	Washer D-8	*	8	34	Washer D-12	*	4
9	Washer D-8	*	9	35	Nut M-12	*	4
10	Nut	47-10	9	36	Roller	47-36	2
11	Caster Wheel	47-11	2	37	Bushing	47-37	2
12	Frame	47-12K	1	38	L-pin	47-38	4
13	Shaft	47-13	2	39	Screw M-6X12	*	4
14	Wheel	47-14	2	40	Pin	47-40	1
15	Retaining ring D-12	*	2	41	Arm assembly	47-41	1
16	Fill Plug	47-16	1	42	Bushing	47-42	2
17	Pin	47-17	1	43	Flow valve kit	47-43A	1
18	Roller	47-18	1	44	Release valve kit	47-44K	1
19	Retaining ring D-10	*	1	45	Pressure relief valve kit	47-45	1
20	Pin	47-20K	1	46	Release lever kit	47-46A	1
21	Washer	47-21K	2	47	Pump/cylinder unit	47-47K	1
22	Retaining ring D-20	*	2	48	Stop arm	47-48	2
23	Pump arm	47-23	1	49	Washer	47-49	2
24	Bumper	47-24	1	50	Retaining ring D-24	*	2
25	Bolt M-8X32	*	1	51	Washer D-6	*	4
26	Foot pedal	47-26	1	52	Speed control valve kit	47-52K	1

(*) Standard hardware item available locally.

For Repair Parts, call 1-800-323-0620

24 hours a day – 365 days a year

Please provide following information:

- Model number
- Serial number (if any)
- Part description and number as shown in parts list

Address parts correspondence to:

Grainger Parts
 P.O. Box 3074
 1657 Shermer Road
 Northbrook, IL 60065-3074 U.S.A.

E
N
G
L
I
S
H

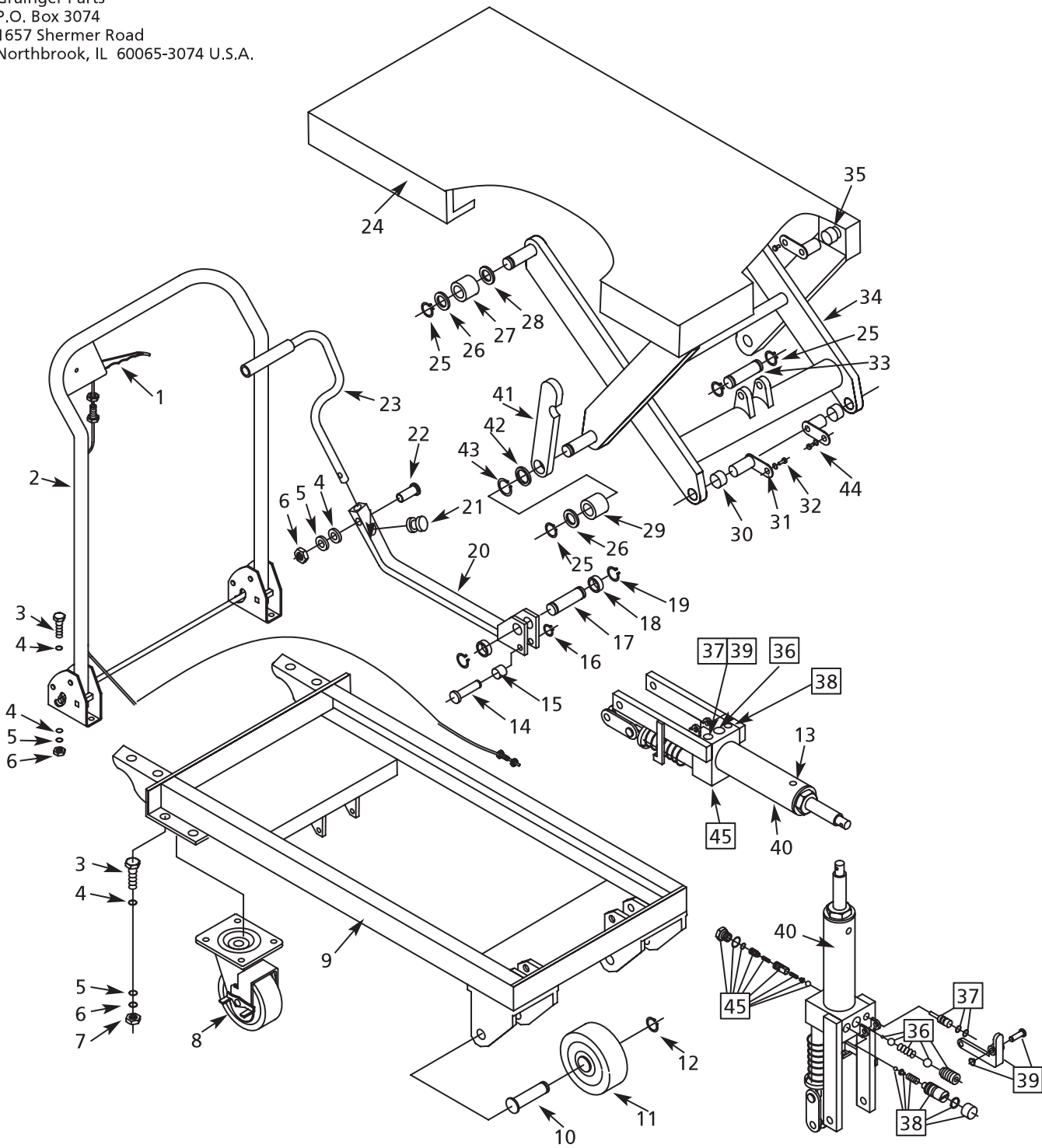


Figure 4 – Repair Parts Illustration for 6W803J

Model 6W803J

Repair Parts List for 6W803J

Ref. No.	Description	Part No.	Qty.	Ref. No.	Description	Part No.	Qty.
1	Lowering Lever and Cable Assembly	803-1A	1	24	Table	803-24	1
2	Handle bar assembly	803-2A	1	25	Retaining ring D-16	*	6
3	Bolt M-8X22	*	12	26	Washer D-16	*	4
4	Washer D-8	*	17	27	Roller	803-27	2
5	Washer D-8	*	13	28	Washer	803-28	2
6	Nut M-8	*	13	29	Roller	803-29	2
7	Washer D-8	*	8	30	Bushing	803-30	2
8	Caster wheel	803-8	2	31	L-pin	803-31	4
9	Frame	803-9	1	32	Screw M-6X12	*	4
10	Shaft	803-10	2	33	Pin	803-33	1
11	Wheel	803-11	2	34	Arm assembly	803-34	1
12	Retaining ring D-12	*	2	35	Bushing	803-35	2
13	Fill Plug	803-13	1	36	Flow valve kit	803-36A	1
14	Pin	803-14	1	37	Release valve kit	803-37A	1
15	Roller	803-15	1	38	Pressure relief valve kit	803-38	1
16	Retaining ring D-10	*	1	39	Release lever kit	803-39A	1
17	Pin	803-17	1	40	Pump/cylinder unit	803-40A	1
18	Washer	803-18A	2	41	Stop arm	803-41	2
19	Retaining ring D-20	*	2	42	Washer	803-42	2
20	Pump arm	803-20	1	43	Retaining ring D-24	*	2
21	Bumper	803-21	1	44	Washer D-6	*	4
22	Bolt M-8X32	*	1	45	Speed control valve kit	803-45	1
23	Foot pedal	803-23	1				

(* Standard hardware item available locally.

For Repair Parts, call 1-800-323-0620

24 hours a day – 365 days a year

Please provide following information:

- Model number
- Serial number (if any)
- Part description and number as shown in parts list

Address parts correspondence to:

Grainger Parts
P.O. Box 3074
1657 Shermer Road
Northbrook, IL 60065-3074 U.S.A.

E
N
G
L
I
S
H

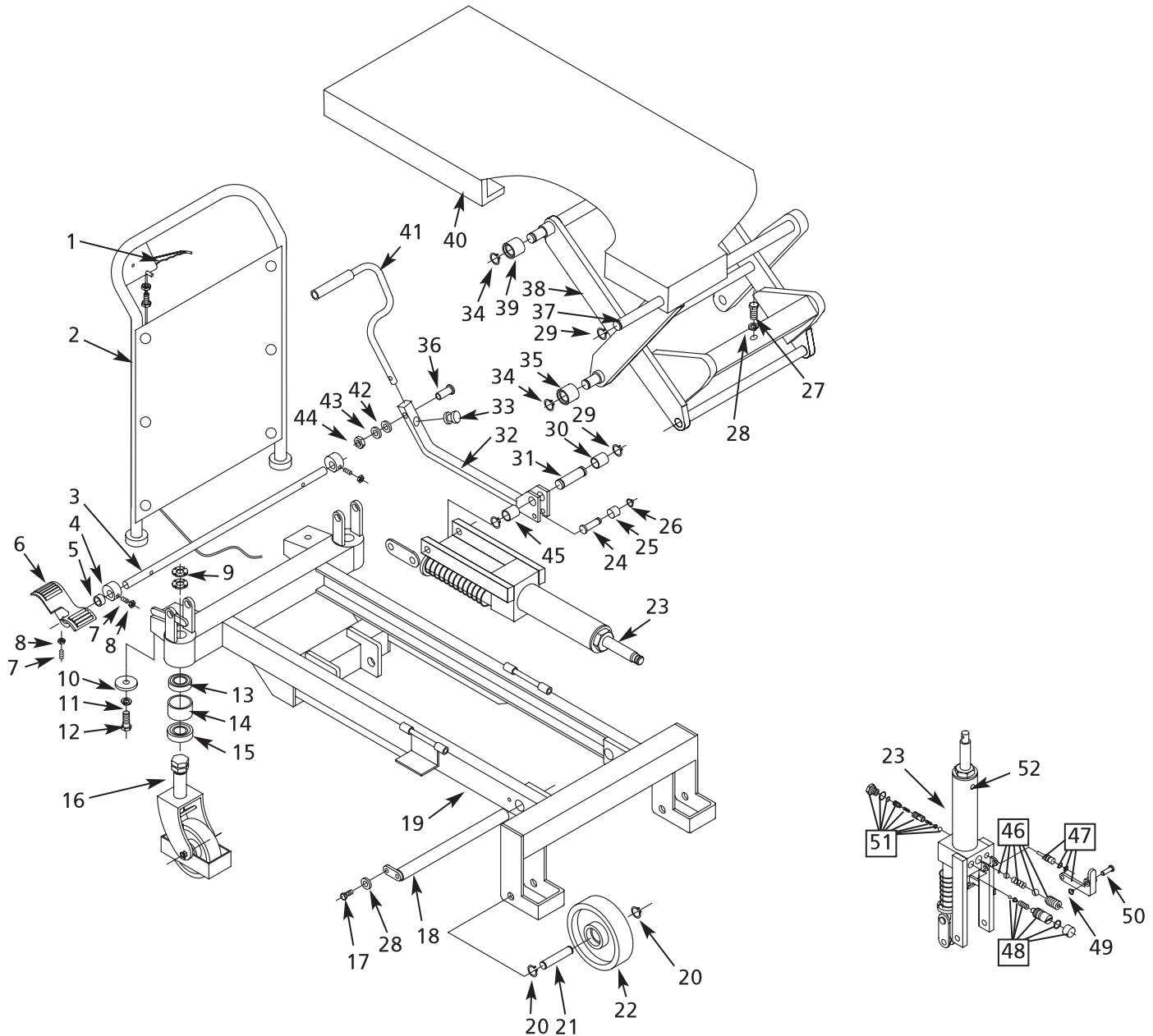


Figure 5 – Repair Parts Illustration for 6W804J

Model 6W804J

Repair Parts List for 6W804J

Ref. No.	Description	Part No.	Qty.	Ref. No.	Description	Part No.	Qty.
1	Lowering Lever and Cable Assembly	804J-1	1	27	Screw	804J-27	1
2	Handle Bar	804J-2	1	28	Washer	804J-28	2
3	Rod	804J-3	1	29	Retaining Ring	804J-29	4
4	Cam	804J-4	2	30	Washer	804J-30	1
5	Washer	804J-5	1	31	Clevis pin	804J-31	1
6	Brake Pedal	804J-6	1	32	Pedal Arm	804J-32	1
7	Screw	804J-7	3	33	Bumper Pad	804J-33	1
8	Nut	804J-8	3	34	Retaining Ring	804J-34	4
9	Nut	804J-9	4	35	Roller	804J-35	2
10	Washer	804J-10	2	36	Bolt	804J-36	1
11	Washer	804J-11	2	37	Shaft	804J-37	1
12	Screw	804J-12	2	38	Scissor Arm	804J-38	1
13	Bearing	804J-13	2	39	Roller	804J-39	2
14	Washer	804J-14	2	40	Table	804J-40	1
15	Bearing	804J-15	2	41	Foot Pedal	804J-41	1
16	Swivel Caster	804J-16	2	42	Washer	804J-42	1
17	Screw	804J-17	1	43	Washer	804J-43	1
18	Shaft	804J-18	1	44	Nut	804J-44	1
19	Frame	804J-19	1	45	Washer	804J-45	1
20	Retaining Ring	804J-20	4	46	Flow Valve Kit	804J-46	1
21	Front Wheel Axle	804J-21	4	47	Release Valve Kit	804J-47	1
22	Front Wheel	804J-22	2	48	Pressure Relief Valve Kit	804J-48	1
23	Pump/Cylinder Unit	804J-23	1	49	Retaining Ring	804J-49	1
24	Bolt	804J-24	1	50	Shaft	804J-50	1
25	Washer	804J-25	1	51	Speed Control Valve Kit	804J-51	1
26	Retaining Ring	804J-26	1	52	Fill Plug	804J-52	1

(*) Standard hardware item available locally.

For Repair Parts, call 1-800-323-0620

24 hours a day – 365 days a year

Please provide following information:

- Model number
- Serial number (if any)
- Part description and number as shown in parts list

Address parts correspondence to:

Grainger Parts
P.O. Box 3074
1657 Shermer Road
Northbrook, IL 60065-3074 U.S.A.

ENGLISH

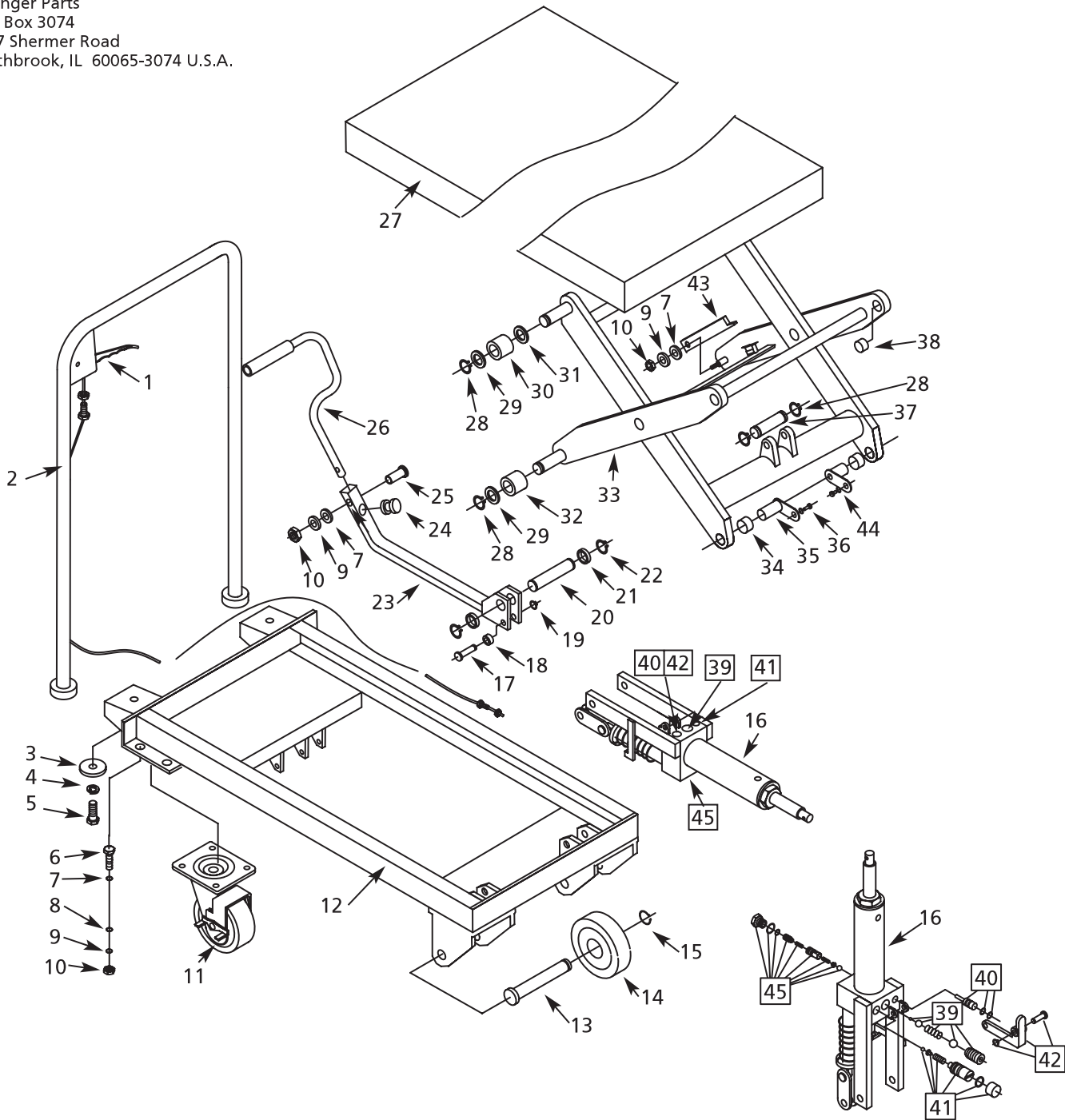


Figure 6 – Repair Parts Illustration for 4ZC18J

Model 4ZC18J

Repair Parts List for 4ZC18J

Ref. No.	Description	Part No.	Qty.	Ref. No.	Description	Part No.	Qty.
1	Lowering Lever and Cable Assembly	18-1A	1	24	Bumper	18-24	1
2	Handle bar	18-2A	1	25	Bolt M-8X32	*	1
3	Washer	18-3	2	26	Foot pedal	18-26	1
4	Washer D-12	*	2	27	Table	18-27	1
5	Bolt M-12X30	*	2	28	Retaining ring D-16	*	6
6	Bolt M-8X22	*	8	29	Washer D-16	*	4
7	Washer D-8	*	11	30	Roller	18-30	2
8	Washer D-8	*	8	31	Washer	18-31	2
9	Washer D-8	*	11	32	Roller	18-32	2
10	Nut M-8	*	11	33	Arm assembly	18-33	1
11	Caster wheel	18-11	2	34	Bushing	18-34	2
12	Frame	18-12	1	35	L-pin	18-35	4
13	Shaft	18-13	2	36	Screw M-6X12	*	4
14	Wheel	18-14	2	37	Pin	18-37	1
15	Retaining ring D-12	*	2	38	Bushing	18-38	2
16	Pump/cylinder unit	18-16A	1	39	Flow valve kit	18-39A	1
17	Pin	18-17	1	40	Release valve kit	18-40A	1
18	Roller	18-18	1	41	Pressure relief valve kit	18-41	1
19	Retaining ring D-10	*	1	42	Release lever kit	18-42A	1
20	Pin	18-20	1	43	Stop arm	18-43	2
21	Washer	18-21A	2	44	Washer D-6	*	4
22	Retaining ring D-20	*	2	45	Speed control valve kit	18-45	1
23	Pump arm	18-23	1				

(*) Standard hardware item available locally.

For Repair Parts, call 1-800-323-0620

24 hours a day – 365 days a year

Please provide following information:

- Model number
- Serial number (if any)
- Part description and number as shown in parts list

Address parts correspondence to:

Grainger Parts
P.O. Box 3074
1657 Shermer Road
Northbrook, IL 60065-3074 U.S.A.

ENGLISH

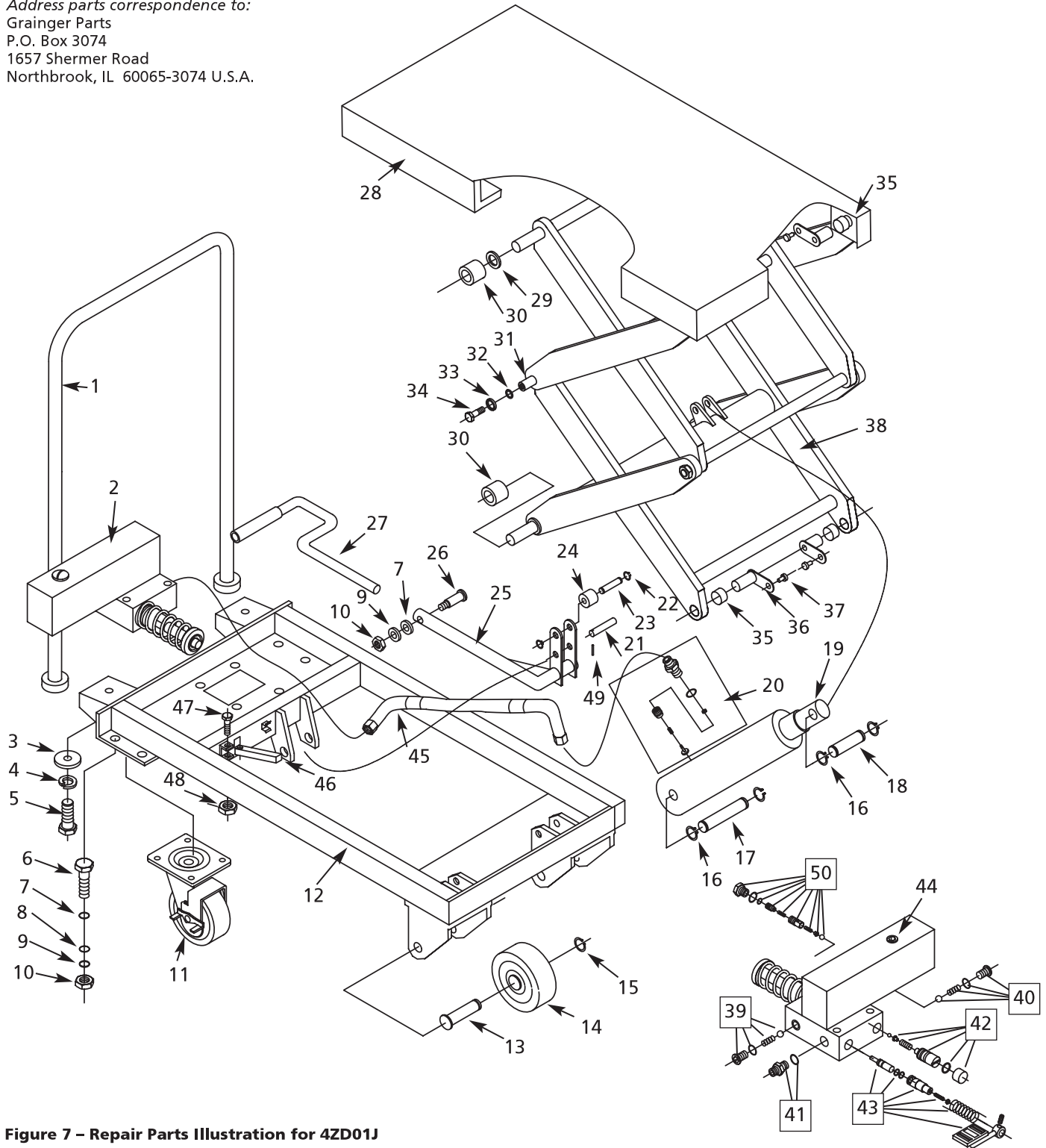


Figure 7 – Repair Parts Illustration for 4ZD01J

Model 4ZD01J

Repair Parts List for 4ZD01J

Ref. No.	Description	Part No.	Qty.	Ref. No.	Description	Part No.	Qty.
1	Handle bar	401-1	1	26	Screw M-8X32	*	1
2	Pump unit	401-2B	1	27	Foot pedal	401-28	1
3	Washer	401-3	2	28	Table	401-29	1
4	Washer D-12	*	2	29	Washer	401-30	2
5	Bolt M-12X30	*	2	30	Roller	401-31	4
6	Bolt M-8X22	*	8	31	Shaft	401-32	2
7	Washer D-8	*	9	32	Washer D-12	*	4
8	Washer D-8	*	8	33	Washer D-12	*	4
9	Washer D-8	*	9	34	Screw M-12X25	*	4
10	Nut M-8	*	9	35	Bushing	401-38	2
11	Caster wheel	401-11	2	36	L-pin	401-39	4
12	Frame	401-12	1	37	Screw M-6X12	*	4
13	Shaft	401-13	2	38	Arm	401-41	1
14	Wheel	401-14	2	39	Check valve kit	401-43	1
15	Retaining ring D-12	*	2	40	Check valve kit	401-44	1
16	Retaining ring D-22	*	4	41	Outlet check valve kit	401-45B	1
17	Pin	401-17	1	42	Pressure relief valve kit	401-46	1
18	Pin	401-18	1	43	Release valve assembly	401-47	1
19	Cylinder	401-19B	1	44	Fill Plug	401-48A	1
20	Cylinder valve kit	401-20B	1	45	Oil hose	401-49A	1
21	Pin	401-21	1	46	Stop arm	401-50	1
22	Retaining ring D-12	*	2	47	Bolt M-10X50	*	1
23	Pin	401-24	1	48	Nut M-10	*	1
24	Roller	401-25	1	49	Roll pin 5X35	*	1
25	Pump arm	401-26	1	50	Flow Valve Kit	401-51	1

(*) Standard hardware item available locally.

Dayton® Hydraulic Elevating Carts

Troubleshooting Chart for 3KR46J, 3KR47K, 6W803J, 6W804J, 4ZC18J & 4ZD01J

Symptom	Possible Cause(s)	Corrective Action
Deck does not raise	<ol style="list-style-type: none"> 1. Excessive Load 2. Oil is low 	<ol style="list-style-type: none"> 1. Remove part of the load 2. Add additional oil to pump. Do not overfill. (Use AW-32 or equal)
Spongy or jerky operation	<ol style="list-style-type: none"> 1. Check for foreign material stuck in the deck or frame rails 2. Oil is low 	<ol style="list-style-type: none"> 1. Correct as necessary 2. Add additional oil to pump. Do not overfill. (Use AW-32 or equal)
Deck lowers too fast	Lowering mechanism operated too fast	Lower table by slowly operating lowering mechanism
Deck raises but does not lower	<ol style="list-style-type: none"> 1. Foreign material lodged in lowering valve causing valve not to open 2. Free joint linkage is binding or damaged 3. Foreign object blocking roller travel 	<ol style="list-style-type: none"> 1. Clean foreign material from lowering valve. Check function of lowering valve 2. Replace as necessary 3. Correct as necessary
Unit will pump up only under no load or when rapidly stroked, or pedal will stroke without pumping	<ol style="list-style-type: none"> 1. Pump is air locked 2. Inlet check valve has foreign material on seat 3. Relief setting is out of adjustment 4. Foreign material on relief valve seat 	<ol style="list-style-type: none"> 1. Bleed air from system 2. Remove and clean inlet ball and seat* 3. Adjust relief setting higher 4. Lower deck - disassemble, clean and reassemble pressure relief *

WARNING: DO NOT ATTEMPT TO PERFORM ANY MAINTENANCE OR REPAIRS TO THE UNIT WITHOUT PROPERLY PLACING MAINTENANCE SUPPORTS IN PLACE. ALWAYS REMOVE WEIGHT BEFORE WORKING ON UNIT.

LIMITED WARRANTY

DAYTON ONE-YEAR LIMITED WARRANTY. Dayton® Hydraulic Elevating Carts, Models covered in this manual, are warranted by Dayton Electric Mfg. Co. (Dayton) to the original user against defects in workmanship or materials under normal use for one year after date of purchase. Any part which is determined to be defective in material or workmanship and returned to an authorized service location, as Dayton designates, shipping costs prepaid, will be, as the exclusive remedy, repaired or replaced at Dayton's option. For limited warranty claim procedures, see PROMPT DISPOSITION below. This limited warranty gives purchasers specific legal rights which vary from jurisdiction to jurisdiction.

LIMITATION OF LIABILITY. To the extent allowable under applicable law, Dayton's liability for consequential and incidental damages is expressly disclaimed. Dayton's liability in all events is limited to and shall not exceed the purchase price paid.

WARRANTY DISCLAIMER. Dayton has made a diligent effort to provide product information and illustrate the products in this literature accurately; however, such information and illustrations are for the sole purpose of identification, and do not express or imply a warranty that the products are MERCHANTABLE, or FIT FOR A PARTICULAR PURPOSE, or that the products will necessarily conform to the illustrations or descriptions. Except as provided below, no warranty or affirmation of fact, expressed or implied, other than as stated in the "LIMITED WARRANTY" above is made or authorized by Dayton.

PRODUCT SUITABILITY. Many jurisdictions have codes and regulations governing sales, construction, installation, and/or use of products for certain purposes, which may vary from those in neighboring areas. While Dayton attempts to assure that its products comply with such codes, it cannot guarantee compliance, and cannot be responsible for how the product is installed or used. Before purchase and use of a product, review the product applications, and all applicable national and local codes and regulations, and be sure that the product, installation, and use will comply with them.

Certain aspects of disclaimers are not applicable to consumer products; e.g., (a) some jurisdictions do not allow the exclusion or limitation of incidental or consequential damages, so the above limitation or exclusion may not apply to you; (b) also, some jurisdictions do not allow a limitation on how long an implied warranty lasts, consequently the above limitation may not apply to you; and (c) by law, during the period of this Limited Warranty, any implied warranties of implied merchant-ability or fitness for a particular purpose applicable to consumer products purchased by consumers, may not be excluded or otherwise disclaimed.

PROMPT DISPOSITION. Dayton will make a good faith effort for prompt correction or other adjustment with respect to any product which proves to be defective within limited warranty. For any product believed to be defective within limited warranty, first write or call dealer from whom the product was purchased. Dealer will give additional directions. If unable to resolve satisfactorily, write to Dayton at address below, giving dealer's name, address, date, and number of dealer's invoice, and describing the nature of the defect. Title and risk of loss pass to buyer on delivery to common carrier. If product was damaged in transit to you, file claim with carrier.

Manufactured for Dayton Electric Mfg. Co., 5959 W. Howard St., Niles, Illinois 60714 U.S.A.

Manufactured for Dayton Electric Mfg. Co.
Niles, Illinois 60714 U.S.A.

