

Speed Measurement Component

Weight	1.77 kg (3.9 lbs.)
Size	23.9cm (H) x 17.3cm (W) x 10.7 cm (L) (9.4" x 6.8" x 4.2")
Construction	Metal camera body, high Impact Resistant polymer housing for LIDAR
Power Supply	Battery Handle: 6.8V to 9.0V @ 400 ma. Nominal Cigarette Cable: 6.8V to 16.0V @ 400ma. Nominal Low voltage inhibit activates between 6.4V and 6.8V
Acquisition Time	Less than .4 second
Speed Accuracy	+2.0 km/h, -2.0 km/h; (+1 mph, -1 mph; +0.86, -0.86 knots)
Range Accuracy	Less than or equal to 0.3 meter (1 foot)
Nominal Range	Minimum < 1.5 meters (5 feet) XLR - Maximum 1219 meters (4000 feet)
Temperature Range	-10 to +60 C, operating -40 to +85 C, non-operating
Lidar Waterproof Rating	Waterproof IP65 rating
Data Output	USB 2.0
Humidity Protection	+37 C, 90% Relative Humidity, 8 hours minimum, operating
Certification card	Included
Operator Manual	Included

Camera Component

Communications	USB 2.0
Housing	Aluminum
Effective operating range	American plates: 23 - 122+ meters (75 to 400+ feet) European plates: 226+ meters (750+ feet)
Sensor	CMOS

Tablet Storage

Storage Device (minimum)	H-P Pavilion X2 or equivalent
--------------------------	-------------------------------

STALKER®

Power to Enforce.

applied concepts, inc.
855 East Collins Blvd. ■ Richardson, Texas 75081
972.398.3780 ■ Fax 972.398.3781



006-0584-00 Rev D

800-STALKER

Copyright © 2020 Applied Concepts, Inc. All Rights Reserved. Specifications are subject to change.



LidarCam XLR | Laser accurate violation capture

LIDARCAM XLR

**Laser Accurate
Photo Positive
Speed Enforcement**

- Laser accuracy, Stalker quality
- Field software runs on Windows-based laptop or tablet
- Single USB connection

Violation Capture

The Stalker LidarCam XLR is based around the industry leading Stalker X-Series LIDAR. Combined with a high-resolution digital camera, the LidarCam XLR becomes the ideal tool for capturing still violation evidence.

Simply aim and shoot. When the officer pulls the trigger to clock a speeder, data evidence - vehicle speed, distance from the LIDAR, and images of the vehicle, number plate, and driver – is sent to a Windows tablet or laptop.



(Tablet not supplied)



STALKER®

Power to Enforce.



Pinpoint Target Acquisition

The Stalker LidarCam XLR is built around Stalker's industry standard X-Series Lidar. Known for its dependability and accuracy, the X-Series is already proven technology and the perfect platform for "point-and-shoot", camera-aided speed enforcement.

- Images and data stored on external, customer provided, PC or tablet
- Camera range of 23 - 122+ meters (75' - 400+') for American plates, 226+ meters (750+ feet) for European plates
- LIDAR range of 1219 meters (4000')
- LidarCam XLR can be set for 1 to 5 photos when a target exceeds the operator-set speed threshold
- Fast acquisition time
- Industry leading range and accuracy
- Removable, high-capacity Li-Ion rechargeable battery handle
- Ergonomic IP65 design
- Speed and distance in Heads-Up Display



Laser accurate - officer witnessed - violation capture

Roadside Laptop and Tablet Portability

- LidarCam XLR connects to the USB port of a PC, or tablet (not supplied).
- LidarCam XLR operates from the rechargeable battery handle or an external battery for longer on-scene operation.



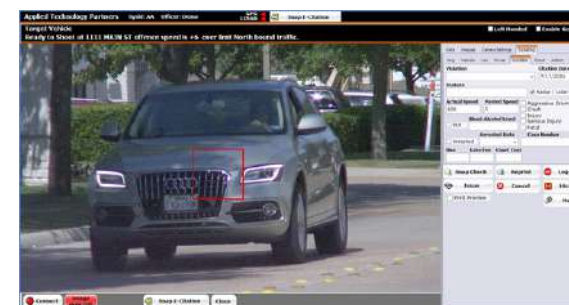
Violation Capture

The Stalker LidarCam XLR is driven by powerful violation capture software.



Violation Capture Software

The violation capture software allows simple setup and operation by the field officer. It provides the location, direction of travel, date, time, and speed along with an image of the violator.



STALKER®

Power to Enforce.

stalkerRadar.com