

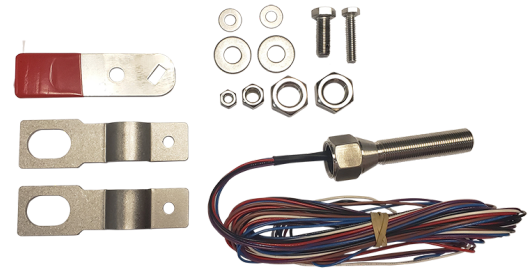
## FEATURES & BENEFITS

### ALTERNATIVE

Mounting the proximity switch to the ball valve is an alternative to using a flow switch plumbed in to the water supply.

### OPTIONS

For more information, visit [www.hawesco.com](http://www.hawesco.com) or call (888) 640-4297.



## SPECIFICATIONS

The Haws SP152D is a double pole proximity switch designed to mount to a Haws emergency shower or eyewash. Mounted to the ball valve, this switch sends an electrical signal to an alarm and control board when the emergency fixture is activated. This switch kit includes the electrical sensor, magnet and mounting hardware.

## APPLICATIONS

Specifically, this proximity switch can be used for most Haws emergency eyewashes or drench showers (not meant for freeze resistant models).

## NOTES:

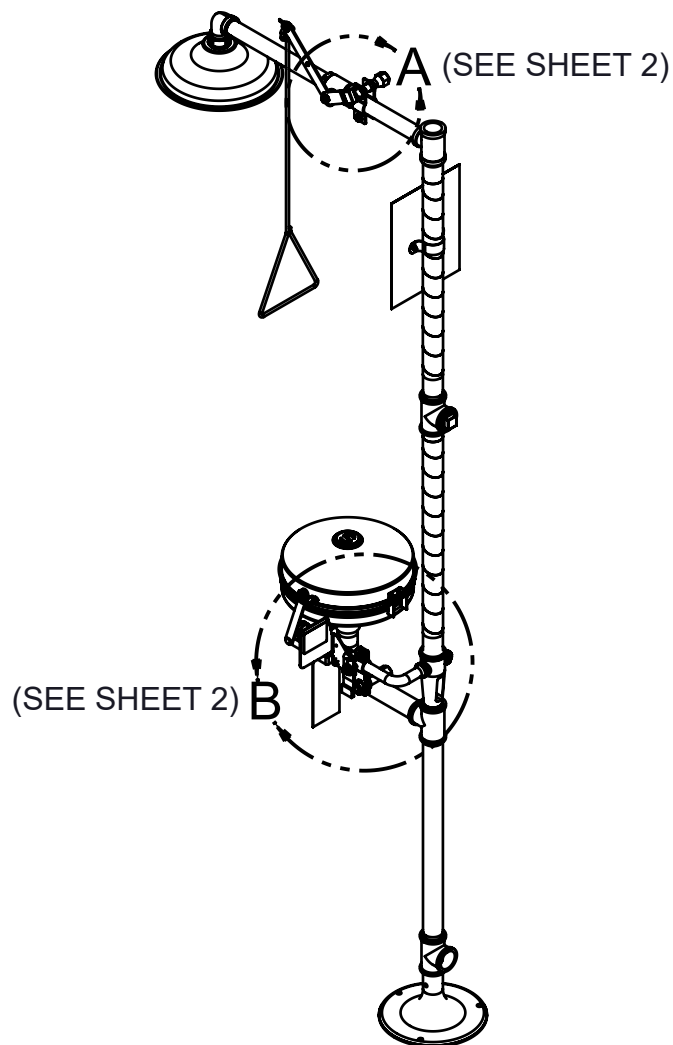
- 1 APPLY SMALL AMOUNT OF THREAD LOCKER (LOCTITE #222MS - SUPPLIED) TO MALE THREADS, WHERE INDICATED.
- 2 APPLY SMALL AMOUNT OF LUBRICANT (DOW CORNING #111 - SUPPLIED) TO PROXIMITY SWITCH (ITEM 1) THREADS, PRIOR TO INSTALLATION (PREVENTS THREAD SEIZING).
3. THESE PROXIMITY SWITCHES ARE CSA CERTIFIED AS ACCESSORIES FOR USE IN HAWS MANUFACTURED ASSEMBLIES.



4. PROXIMITY SWITCH INSTALLATION LOCATIONS:
  - SINGLE PROXIMITY SWITCH MODELS SP152S AND SP152D CAN BE INSTALLED AT EITHER:
    - A) A SHOWER HEAD ONLY (SEE SHEET 2, DETAIL A), OR
    - B) AN EYE/FACE WASH ONLY (SEE SHEET 2, DETAIL B AND SHEET 3)
  - DOUBLE PROXIMITY SWITCH MODELS SP152SC AND SP152DC CAN BE INSTALLED AT:
    - A) BOTH A SHOWER HEAD AND EYE/FACE WASH ON COMBINATION SAFETY SHOWER UNITS (SEE SHEET 2, DETAILS A AND B AND SHEET 3).
5. PROXIMITY SWITCH KIT BRACKETS WILL FIT 1/2" - 1" IPS PIPE SIZES. SEE HAWS MODEL COMPATIBILITY TABLE ON PAGE 3 OF HAWS SP152 SERIES OPERATION AND MAINTENANCE MANUAL, FOR MODELS THAT THESE KITS WILL FIT ON.

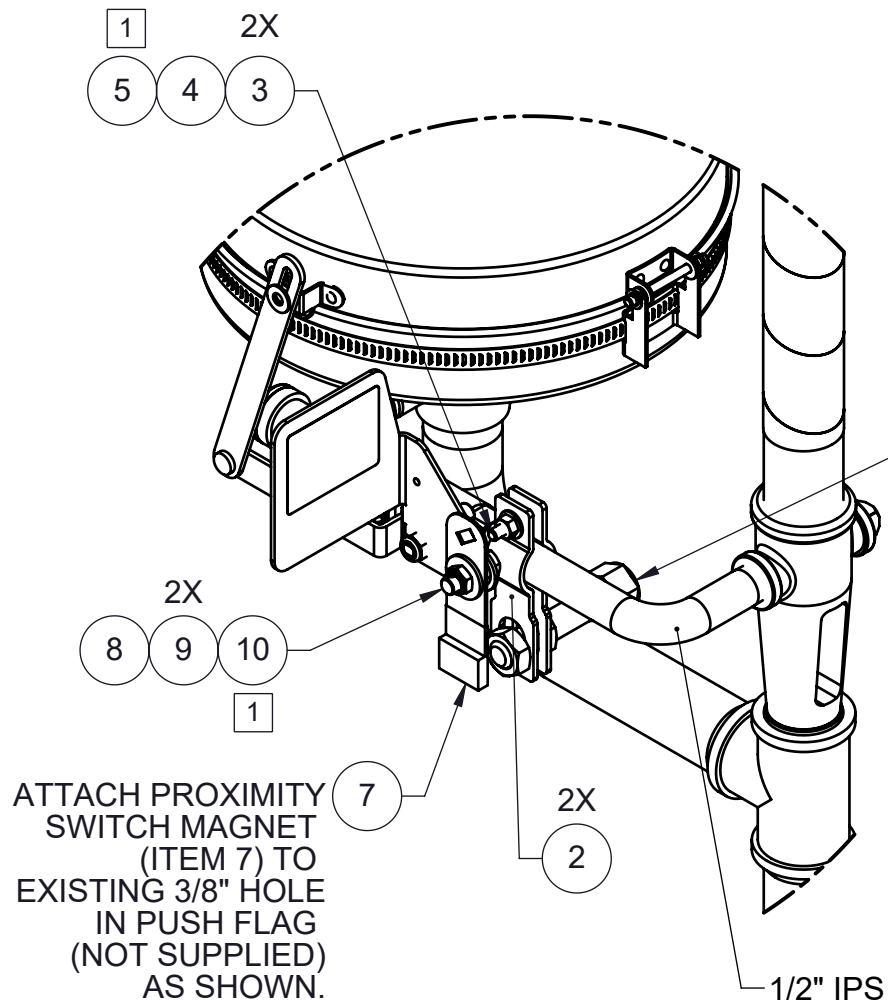
PARTS BREAKDOWN					
MODEL NUMBER		SP152S	SP152D	SP152SC	SP152DC
ITEM NO.	DESCRIPTION	QTY.	QTY.	QTY.	QTY.
1	PROXIMITY SWITCH, SPDT	1	--	2	--
	PROXIMTY SWITCH, DPDT	--	1	--	2
2	STRAP, PROXIMITY SWITCH	2	2	4	4
3	WASHER, FLAT, 1/4	2	2	4	4
4	NUT, 1/4-20	1	1	2	2
5	SCREW, 1/4-20 X 1-1/4	1	1	2	2
6	JAM NUT, 5/8-18, PROXIMITY SWITCH	2	2	4	4
7	MAGNET, PROXIMITY SWITCH	1	1	2	2
8	NUT, 3/8-24	1	1	1	1
9	WASHER, FLAT, 3/8	2	2	2	2
10	SCREW, 3/8-24 X 1 W/HOLE	1	1	1	1
N/A	LOCTITE THREAD LOCKER 222MS (0003244389)	1	1	1	1
N/A	DOW CORNING LUBRICANT #111 (0003247000)	1	1	1	1

**SEE SHEET 7 FOR ELECTRICAL WIRING  
OF PROXIMITY SWITCH(ES)**



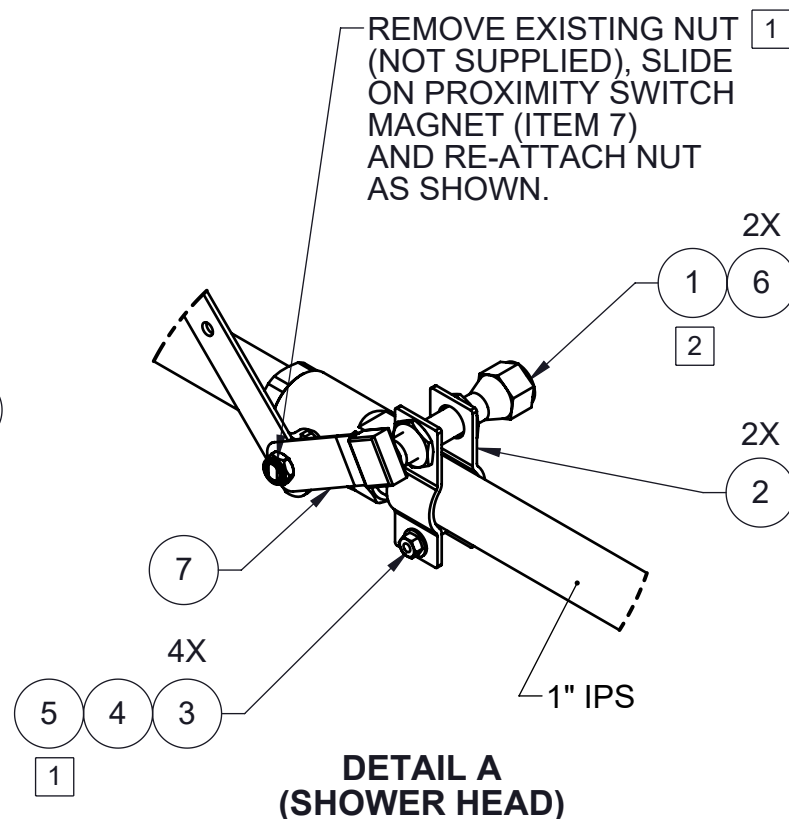
**HAWS 8300-8309  
SHOWN FOR REFERENCE  
(NOT SUPPLIED)**

		1455 KLEPPE LANE SPARKS, NEVADA 89431 (775) 359-4712 FAX (775) 359-7424 E-MAIL: HAWS@HAWS.CO.COM WEBSITE: WWW.HAWS.CO.COM	
ECN: 5551	REV. ECN: 5637	BY: FV	MODEL(S) SP152S/SP152D/SP152SC/SP152DC
DRAWN: LF	DATE: 07/30/20	CHKD: DP	PART NUMBER 0510001049.D
APPROVED: FV	DATE: 01/12/21	SCALE: 1:16	REVISION 2
DRAWING TYPE: INSTALLATION		SIZE: A	SHEET 1 OF 4



**DETAIL B  
(EYE/FACE WASH)**

**SEE SHEET 6 FOR VERTICAL ORIENTATION  
OF PROXIMITY SWITCH ON EYE/FACE WASH  
FOR MODELS 7324 OR 8317.**



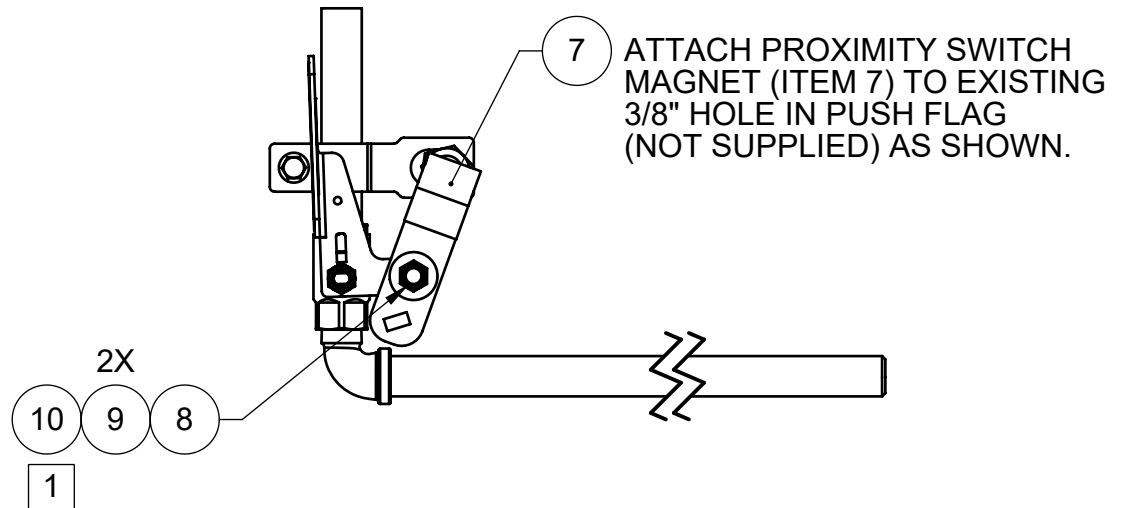
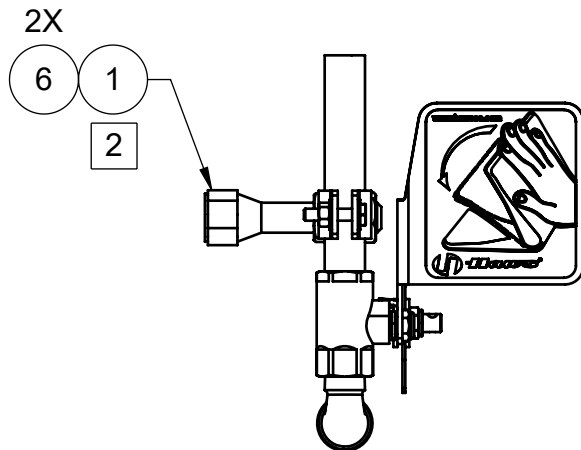
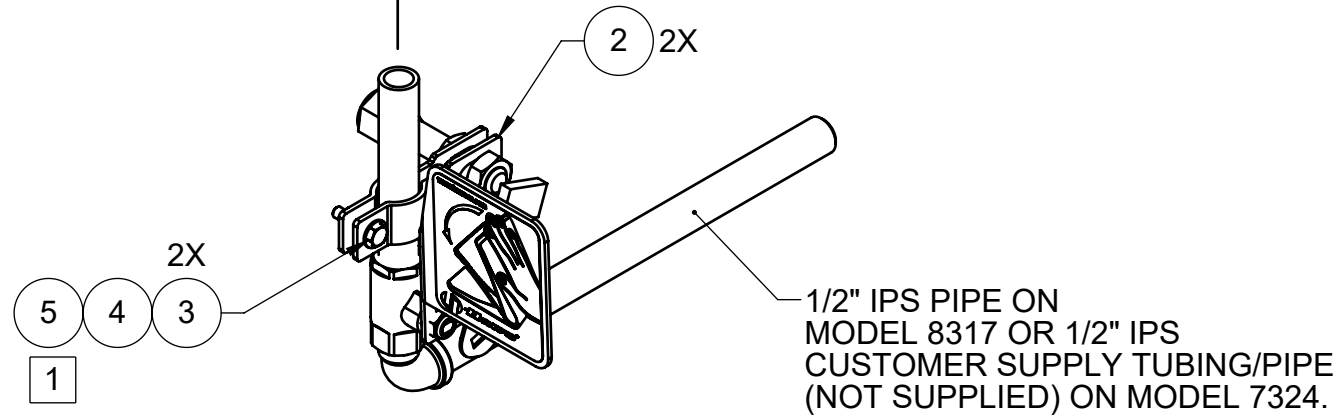
**PROXIMITY SWITCH LOCATION DETAILS  
(SWITCHES ARE SHOWN ON A COMBO  
SHOWER FOR REFERENCE. CERTAIN  
SHOWER/EYEWASH MODELS MAY REQUIRE  
THAT THE BRACKETS BE MOUNTED TO  
CUSTOMER SUPPLY PIPING)**



1455 KLEPPE LANE  
SPARKS, NEVADA 89431  
(775) 359-4712 FAX (775) 359-7424  
E-MAIL: HAWS@HAWSO.COM  
WEBSITE: WWW.HAWSO.COM

ECN: 5551	REV. ECN: 5637	BY: FV	MODEL(S)	PART NUMBER
DRAWN: LF	DATE: 07/30/20	CHKD: DP	SP152S/SP152D/SP152SC/SP152DC	0510001049.D
APPROVED: FV	DATE: 01/12/21	SCALE: 1:20	DRAWING TYPE: INSTALLATION	REVISION 2
SHEET 2 OF 4				

TO  
EYE/FACE WASH



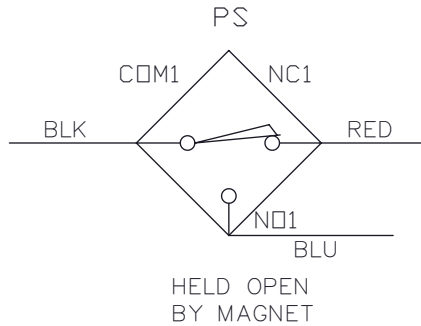
**VERTICAL ORIENTATION  
OF PROXIMITY SWITCH ON EYE/FACE WASH  
FOR MODELS 7324 OR 8317 SHOWN.  
SEE PREVIOUS SHEET FOR ALL OTHER INSTALLATIONS.**

				1455 KLEPPE LANE SPARKS, NEVADA 89431 (775) 359-4712 FAX (775) 359-7424 E-MAIL: HAWS@HAWS.CO.COM WEBSITE: WWW.HAWS.CO.COM			
ECN: 5551	REV. ECN: 5637	BY: FV	MODEL(S)	SP152S/SP152D/SP152SC/SP152DC			PART NUMBER
DRAWN: LF	DATE: 07/30/20	CHKD: DP				REVISION	2
APPROVED: FV	DATE: 01/12/21	SCALE: 1/4	DRAWING TYPE:	INSTALLATION	SIZE: A	SHEET 3 OF 4	

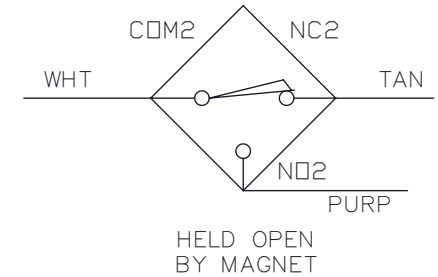
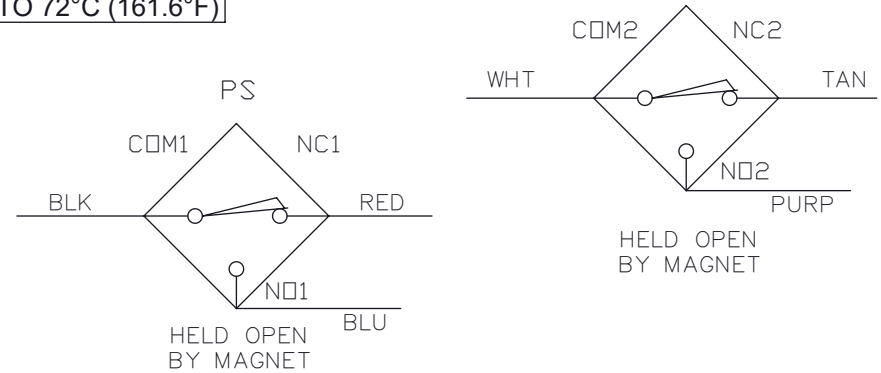
## ALL ELECTRICAL WORK TO BE DONE PER LOCAL CODE

PROXIMITY SWITCHES ARE RATED TO 3 AMPS DC,  
VOLTAGE 0-120 VAC or 0-28 VDC, 100VA  
AMBIENT TEMPERATURE -40°C (-40°F) TO 72°C (161.6°F)

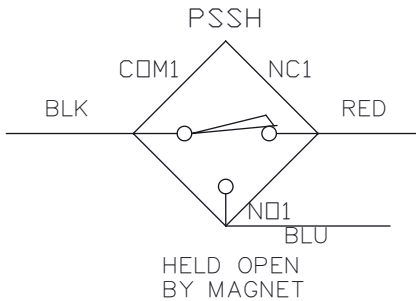
### SP152S



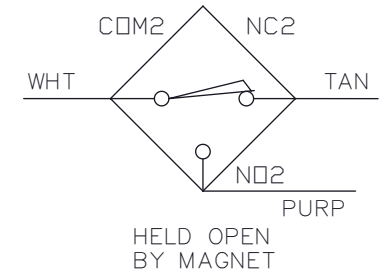
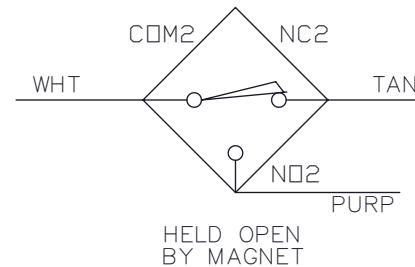
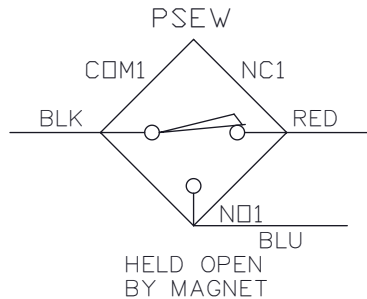
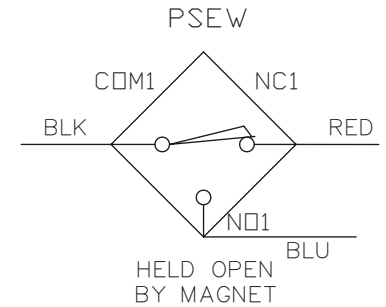
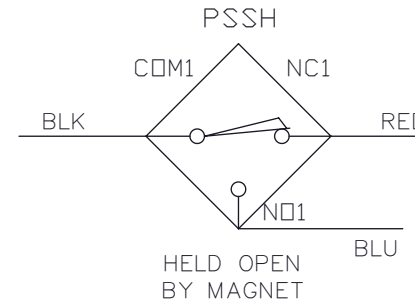
### SP152D



### SP152SC



### SP152DC



#### LEGEND:

BLK - BLACK  
BLU - BLUE  
COM - COMMON  
PS - PROXIMITY SWITCH  
PSSH - PROXIMITY SWITCH, SHOWER  
PSEW - PROXIMITY SWITCH, EYEWASH  
PURP - PURPLE  
NO - NORMALLY OPEN  
NC - NORMALLY CLOSED  
WHT - WHITE



1455 KLEPPE LANE  
SPARKS, NEVADA 89431  
(775) 359-4712 FAX (775) 359-7424  
E-MAIL: HAWS@HAWS.CO.COM  
WEBSITE: WWW.HAWS.CO.COM

ECN: 5551	REV. ECN: 5637	BY: FV	MODEL(S)	PART NUMBER
DRAWN: LF	DATE: 07/30/20	CHKD: DP	SP152S/SP152D/SP152SC/SP152DC	0510001049.D
APPROVED: FV	DATE: 01/12/21	SCALE: 1:12	DRAWING TYPE: INSTALLATION	REVISION
			SIZE: A	2
				SHEET 4 OF 4