



# model AX14S

AXION Advantage® Upgrade Kit

## FEATURES & BENEFITS

### SHOWERHEAD

AXION® MSR stainless steel showerhead uses a hydrodynamic design to give equal distribution of water throughout the entire footprint of flow.

### EYE/FACE WASH

AXION® MSR eye/face wash head (patent pending) uses an inverted directional laminar flow to sweep contaminants away from the vulnerable nasal cavity.

## OPTIONS

For more information, visit [www.hawscow.com](http://www.hawscow.com) or call (888) 640-4297.



## SPECIFICATIONS

Model AX14S AXION Advantage® stainless steel eye/face wash system shall include the AXION® MSR stainless steel eye/face wash and showerhead, stainless steel connecting hardware, ANSI eyewash gauge, tape measure, complete installation instructions and ANSI compliance information. The AXION Advantage system is ANSI compliant when installed correctly based on manufacturer guidelines and when tested against the ANSI Z358.1 checklist included with the product. The materials provided offer complete ANSI compliance tools and instructions. At the current time, ANSI does not regulate product brands, models, or the interchange of product components.

## APPLICATIONS

Perfect for installed emergency equipment that might be outdated, under-performing, or potentially out of compliance with the current ANSI Z358.1 standard. Specifically, this system can replace eyewash heads that flow too low or high, unevenly, or uncomfortably, and a showerhead that flows unevenly or excessively. The user will be assured their equipment will comply with ANSI emergency protocol using the best performing eye/face wash and shower head on the market.

# PARTS BREAKDOWN

**IMPORTANT:** UNITS MUST BE FULLY TESTED  
AND CHECKED FOR ANSI COMPLIANCE USING  
ENCLOSED CHECKLIST AFTER UPGRADING  
THE INSTALLATION.

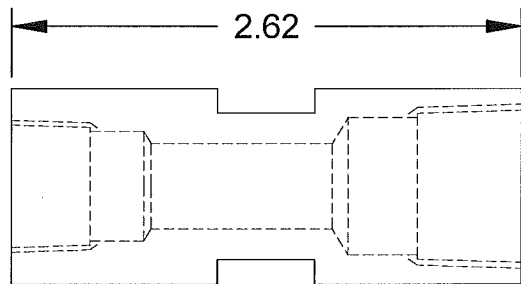
\* NOTE CORRESPONDING LETTERS ON  
INSTALLATION DRAWING.

## PARTS NOT SHOWN BUT SUPPLIED

- AXION SHOWER HEAD
- AXION EYE/FACE WASH ASSEMBLY
- MEASURING TAPE
- \*\* - EYEWASH GAUGE
- ANSI MIN. PERFORMANCE CHECKLIST

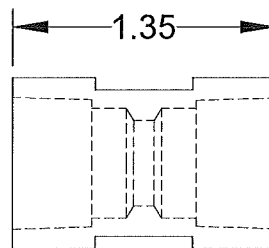
\*\* NOTE: IF PRESENT, REMOVE  
PAPER-BACKING PRIOR TO USE.

**OVERLAY ACTUAL ADAPTERS  
ON FULL SCALE OUTLINES  
TO ASSIST WITH ADAPTER  
IDENTIFICATION PROCESS**



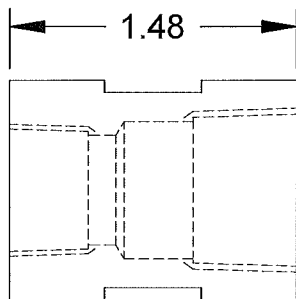
(E) \*

3/8" NPT (F) X 1/2" NPT (F)



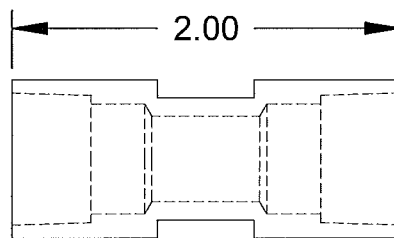
(A) \*

3/8" X 3/8" NPT (F)



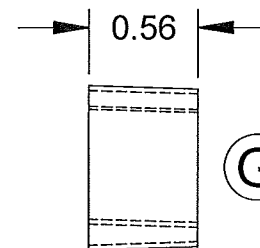
(F) \*

3/8" NPT (F) X 1/2" NPT (F)



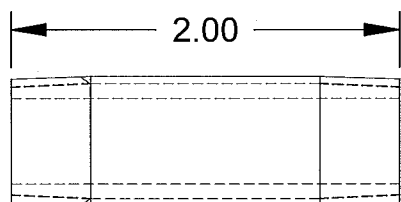
(B) \*

3/8" X 3/8" NPT (F)



(G) \*

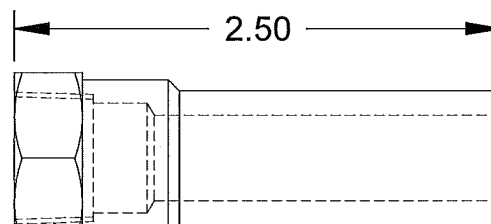
1/2" NPT (M) X 3/8" NPT (F)  
(NOTE: IF PRESENT, REMOVE  
COVER PRIOR TO USE)



(C) \*

3/8" NPSM

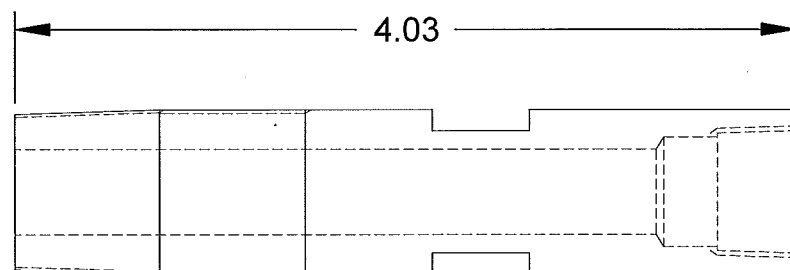
2X 3/8" NPT (M)



(H) \*

3/8" NPT (F)

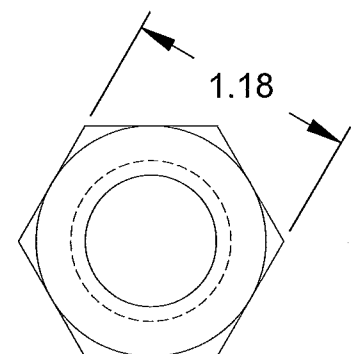
1/4" NPSM (F)



(D) \*

1/2" NPT (M)

1/2" NPSM



1/2" NPS NUT

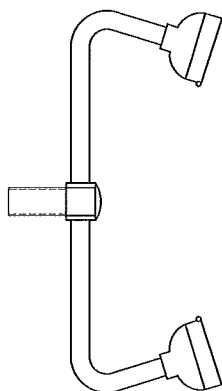
WHEN ORDERING PARTS PLEASE SPECIFY MODEL NUMBER.



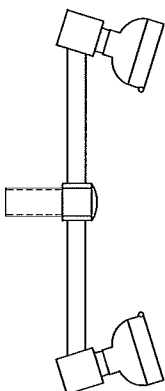
1455 KLEPPE LANE  
SPARKS, NEVADA 89431  
(775) 359-4712 FAX (775) 359-7424  
E-MAIL: HAWS@HAWS.CO.COM  
WEBSITE: WWW.HAWS.CO.COM

ECN NO. 4856	REVISED PER BY ECN: 4856 JMD	MODEL(S)	AX14 & AX14S	PART NUMBER	0002080248
DRAWN H. MERRITT	DATE 09/03/13	APPROVED	AXION® ADVANTAGE™	DRAWING NO.	16296A
SCALE: 1:1	DRAWING TYPE: PARTS BREAKDOWN	SIZE: A	SHEET 1 OF 1	REV	1

# TO UPGRADE ACORN UNITS



ACORN STANDARD EYEWASH



ACORN BARRIER FREE EYEWASH

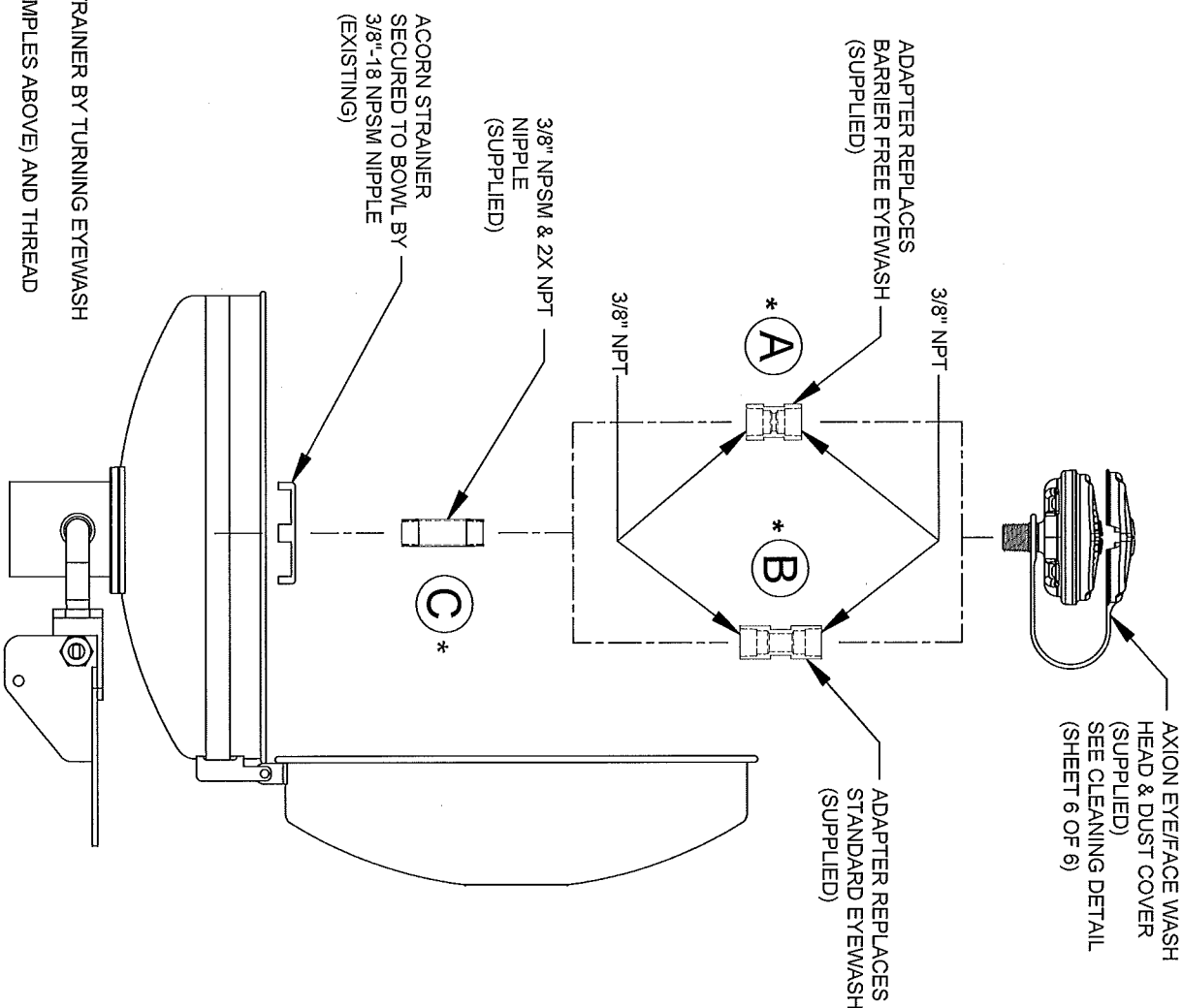
## NOTES:

NOT FOR USE ON ANY FREEZE RESISTANT UNITS.

\* NOTE CORRESPONDING LETTERS ON PARTS BREAKDOWN DRAWING.

## INSTALLATION INSTRUCTIONS:

1. REMOVE EXISTING ACORN EYEWASH ASSEMBLY FROM BOWL AND STRAINER BY TURNING EYEWASH ASSEMBLY COUNTER CLOCKWISE.
2. CONNECT 3/8"-18 NPSM NIPPLE TO APPROPRIATE ADAPTER (SEE EXAMPLES ABOVE) AND THREAD STRAINER ONTO NIPPLE.
3. CONNECT NIPPLE TO BOWL AND TIGHTEN ASSEMBLY USING WRENCH. USE SEALANT AS NECESSARY.
4. UNTHREAD STRAINER (ROTATE CLOCKWISE) UNTIL IT IS SECURE AGAINST BOWL.
5. FLUSH SYSTEM TO REMOVE LINE DEBRIS PRIOR TO INSTALLING AXION PRODUCTS.
6. PLACE AXION EYEWASH WASH SHANK THROUGH DUST COVER LOOP AND CONNECT TO ADAPTER.
7. ORIENT TAB (SEE SHEET 6 OF 6) ON AXION EYEWASH WASH TOWARDS THE BACK (AWAY FROM USER). DO NOT OVER-TIGHTEN.
8. FULLY TEST UNIT AND CHECK FOR ANSI COMPLIANCE USING ENCLOSED CHECKLIST AFTER UPGRADING THE INSTALLATION.

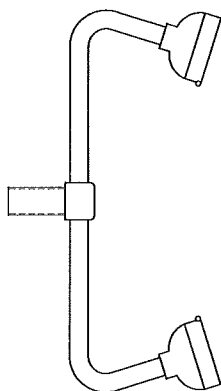


1455 KLEPPE LANE  
SPARKS, NEVADA 89431  
(775) 359-4712 FAX (775) 359-7424  
E-MAIL: HAWS@HAWS.CO.COM  
WEBSITE: WWW.HAWS.CO.COM

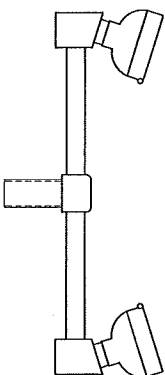
EQ. NO. REVISED PER:	MODEL(S)
4433	AXION ADVANTAGE™
4434	AXION ADVANTAGE™
4435	AXION ADVANTAGE™
4436	AXION ADVANTAGE™
4437	AXION ADVANTAGE™
4438	AXION ADVANTAGE™
4439	AXION ADVANTAGE™
4440	AXION ADVANTAGE™
4441	AXION ADVANTAGE™
4442	AXION ADVANTAGE™
4443	AXION ADVANTAGE™
4444	AXION ADVANTAGE™
4445	AXION ADVANTAGE™
4446	AXION ADVANTAGE™
4447	AXION ADVANTAGE™
4448	AXION ADVANTAGE™
4449	AXION ADVANTAGE™
4450	AXION ADVANTAGE™
4451	AXION ADVANTAGE™
4452	AXION ADVANTAGE™
4453	AXION ADVANTAGE™
4454	AXION ADVANTAGE™
4455	AXION ADVANTAGE™
4456	AXION ADVANTAGE™
4457	AXION ADVANTAGE™
4458	AXION ADVANTAGE™
4459	AXION ADVANTAGE™
4460	AXION ADVANTAGE™
4461	AXION ADVANTAGE™
4462	AXION ADVANTAGE™
4463	AXION ADVANTAGE™
4464	AXION ADVANTAGE™
4465	AXION ADVANTAGE™
4466	AXION ADVANTAGE™
4467	AXION ADVANTAGE™
4468	AXION ADVANTAGE™
4469	AXION ADVANTAGE™
4470	AXION ADVANTAGE™
4471	AXION ADVANTAGE™
4472	AXION ADVANTAGE™
4473	AXION ADVANTAGE™
4474	AXION ADVANTAGE™
4475	AXION ADVANTAGE™
4476	AXION ADVANTAGE™
4477	AXION ADVANTAGE™
4478	AXION ADVANTAGE™
4479	AXION ADVANTAGE™
4480	AXION ADVANTAGE™
4481	AXION ADVANTAGE™
4482	AXION ADVANTAGE™
4483	AXION ADVANTAGE™
4484	AXION ADVANTAGE™
4485	AXION ADVANTAGE™
4486	AXION ADVANTAGE™
4487	AXION ADVANTAGE™
4488	AXION ADVANTAGE™
4489	AXION ADVANTAGE™
4490	AXION ADVANTAGE™
4491	AXION ADVANTAGE™
4492	AXION ADVANTAGE™
4493	AXION ADVANTAGE™
4494	AXION ADVANTAGE™
4495	AXION ADVANTAGE™
4496	AXION ADVANTAGE™
4497	AXION ADVANTAGE™
4498	AXION ADVANTAGE™
4499	AXION ADVANTAGE™
4500	AXION ADVANTAGE™



## TO UPGRADE GUARDIAN UNITS



GUARDIAN STANDARD EYEWASH



GUARDIAN DUST COVER EYEWASH

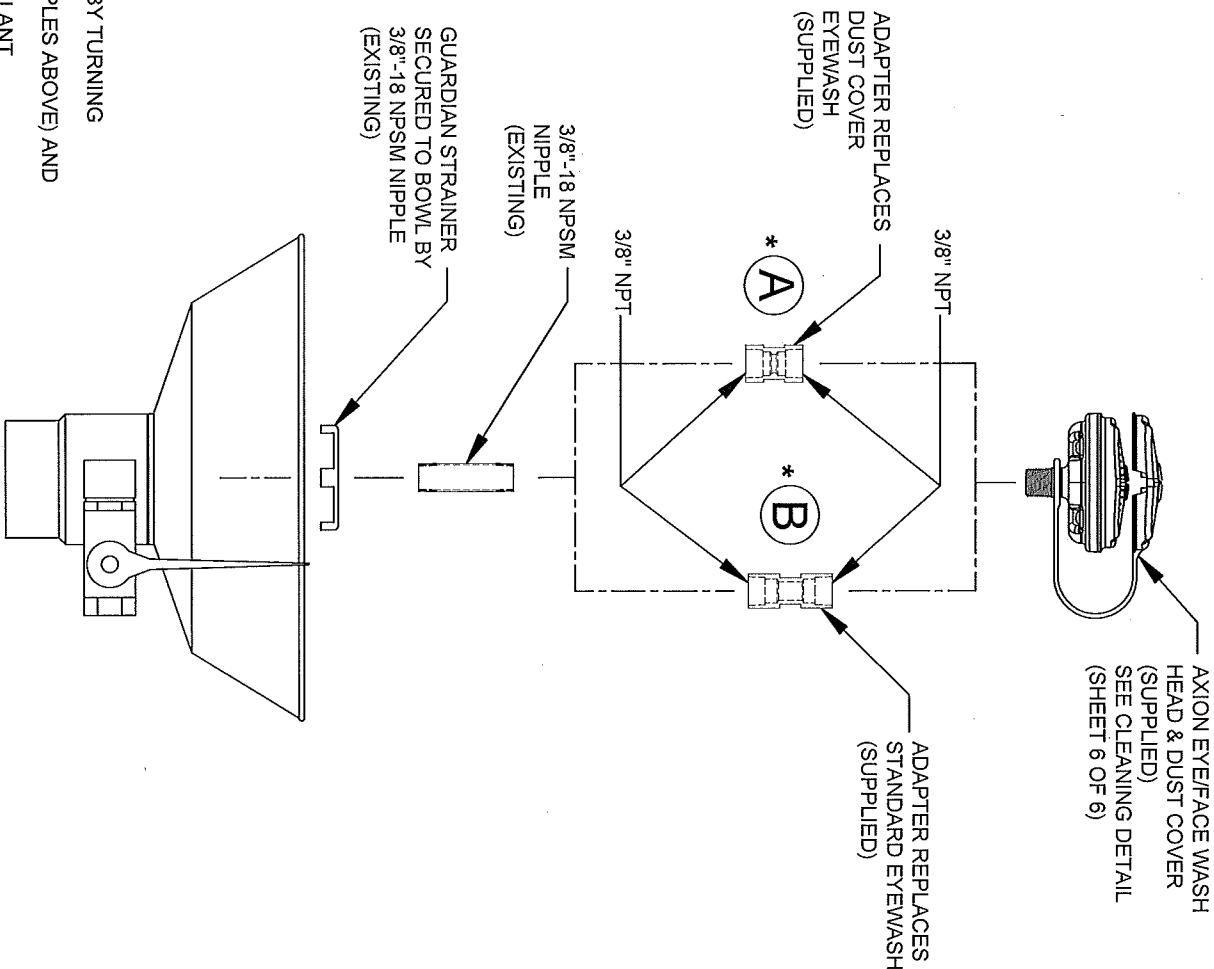
### NOTE:

NOT FOR USE ON ANY FREEZE RESISTANT UNITS.

\* NOTE CORRESPONDING LETTERS ON PARTS BREAKDOWN DRAWING.

### INSTALLATION INSTRUCTIONS:

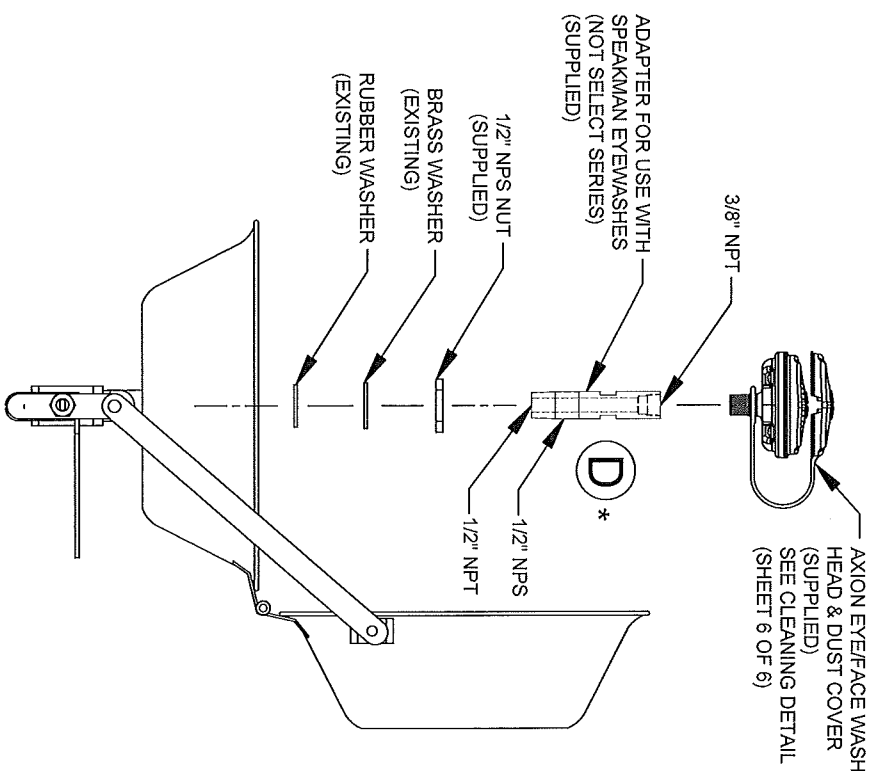
1. REMOVE EXISTING GUARDIAN EYEWASH ASSEMBLY FROM BOWL AND STRAINER BY TURNING EYEWASH ASSEMBLY COUNTER CLOCKWISE.
2. CONNECT EXISTING 3/8"-18 NPSM NIPPLE TO APPROPRIATE ADAPTER (SEE EXAMPLES ABOVE) AND THREAD STRAINER ONTO NIPPLE.
3. CONNECT NIPPLE TO BOWL AND TIGHTEN ASSEMBLY USING WRENCH, USING SEALANT AS NECESSARY.
4. UNTHREAD STRAINER (ROTATE CLOCKWISE) UNTIL SECURE AGAINST BOWL.
5. FLUSH SYSTEM TO REMOVE DEBRIS PRIOR TO INSTALLING AXION PRODUCTS.
6. PLACE AXION EYEFACE WASH SHANK THROUGH DUST COVER LOOP AND CONNECT TO ADAPTER.
7. ORIENT TAB (SEE SHEET 6 OF 6) ON AXION EYEFACE WASH TOWARDS THE BACK (AWAY FROM USER). DO NOT OVER-TIGHTEN.
8. FULLY TEST UNIT AND CHECK FOR ANSI COMPLIANCE USING ENCLOSED CHECKLIST AFTER UPGRADING THE INSTALLATION.



1465 KLEPPLE LANE  
SPARKS, NEVADA 89431  
(775) 359-4712 FAX (775) 359-7424  
E-MAIL: HAWS@HAWS.CO.COM  
WEBSITE: WWW.HAWS.CO.COM

ENGINEERED PER: [Signature]	MODEL(S)	AX14 & AX14S	PART NUMBER
DRAWN BY: [Signature]	AXION® ADVANTAGE™		0002080248.D
APPROVED BY: [Signature]	SCALE: 1:1/2	DRAWING TYPE: INSTALLATION	DRAWING NO. 16284A
	SIZE: A	SHEET: 3 OF 7	REV: 1

## TO UPGRADE SPEAKMAN UNITS

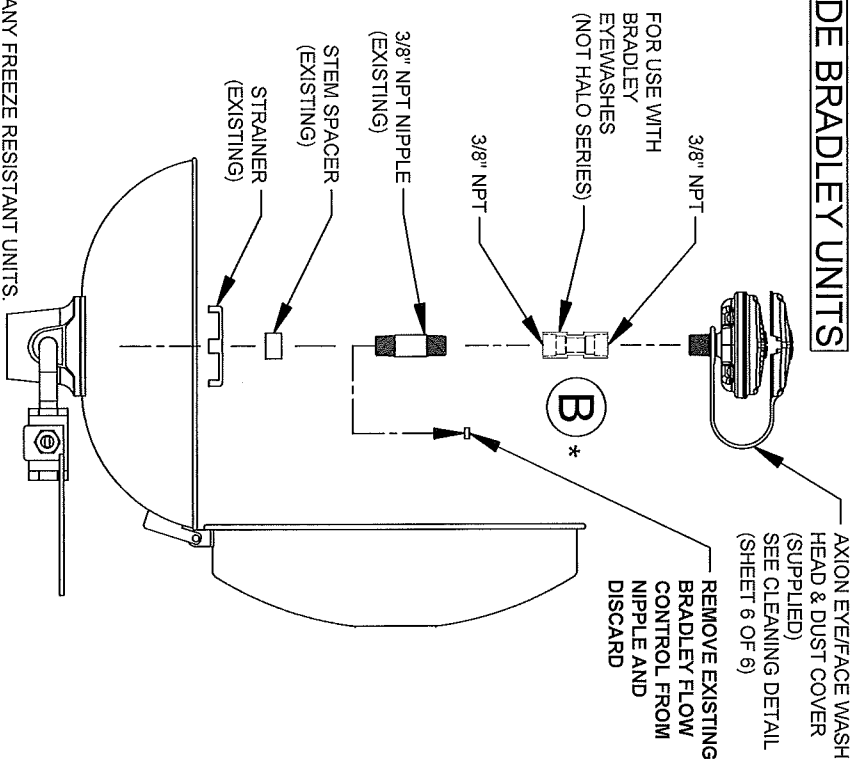


**NOTE:**  
NOT FOR USE ON ANY FREEZE RESISTANT UNITS.  
\* NOTE CORRESPONDING LETTERS ON PARTS BREAKDOWN DRAWING.

### INSTALLATION INSTRUCTIONS:

1. REMOVE EXISTING SPEAKMAN EYEWASH ASSEMBLY FROM BOWL BY TURNING EYEWASH ASSEMBLY COUNTER CLOCKWISE.
2. FULLY THREAD 1/2" NPS NUT ONTO ADAPTER.
3. ASSEMBLE ADAPTER AND WASHERS AS SHOWN ABOVE.
4. CONNECT ADAPTER TO BOWL AND TIGHTEN USING WRENCH TO TURN THE ADAPTER. USE SEALANT AS NECESSARY.
5. FLUSH SYSTEM TO REMOVE LINE DEBRIS PRIOR TO INSTALLING AXION PRODUCTS.
6. UNTHREAD 1/2" NPS NUT (CLOCKWISE ROTATION) TO SECURE THE ADAPTER TO THE BOWL AND COMPRESS WASHERS AND SEAL BOWL. CHECK FOR LEAKS AFTER INSTALLING.
7. PLACE AXION EYEFACE WASH SHANK THROUGH DUST COVER LOOP AND CONNECT TO ADAPTER.
8. ORIENT TAB (SEE SHEET 6 OF 6) ON AXION EYEFACE WASH TOWARDS THE BACK (AWAY FROM USER). DO NOT OVER-TIGHTEN.
9. FULLY TEST UNIT AND CHECK FOR ANSI COMPLIANCE USING ENCLOSED CHECKLIST AFTER UPGRADING THE INSTALLATION.

## TO UPGRADE BRADLEY UNITS



**NOTE:**  
NOT FOR USE ON ANY FREEZE RESISTANT UNITS.  
\* NOTE CORRESPONDING LETTERS ON PARTS BREAKDOWN DRAWING.

### INSTALLATION INSTRUCTIONS:

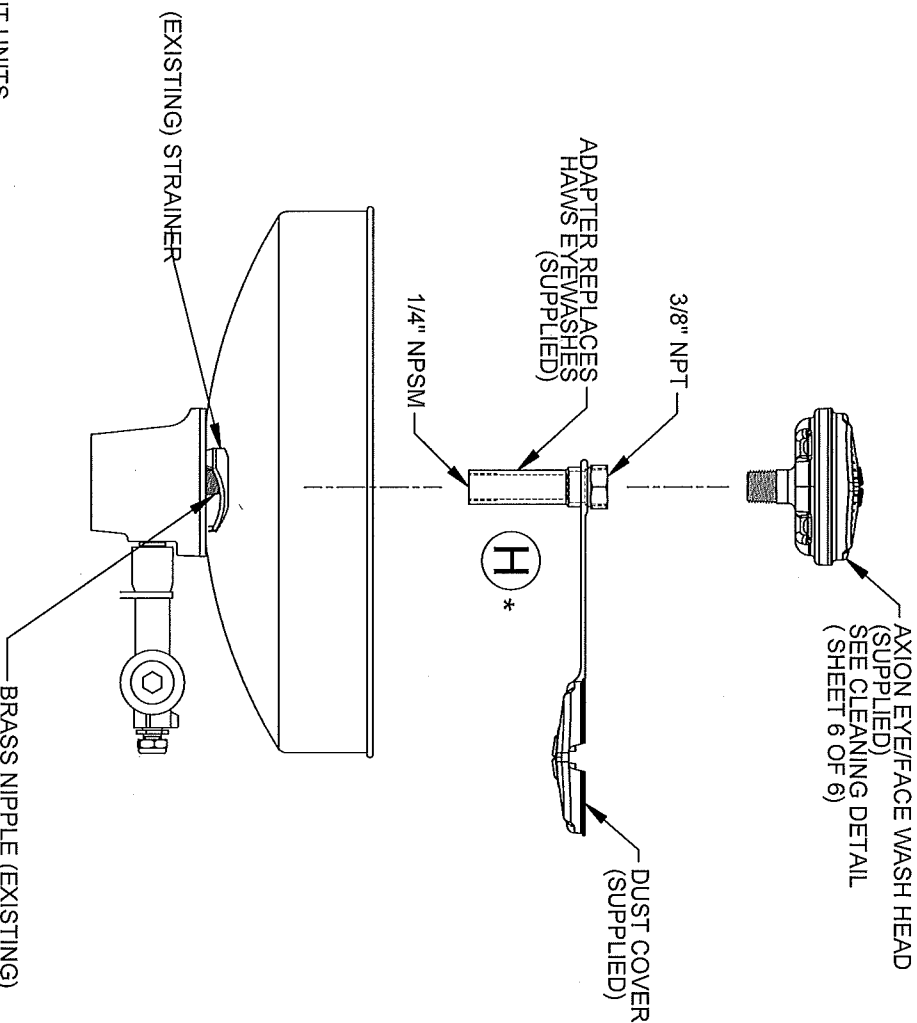
1. REMOVE EXISTING BRADLEY EYEWASH ASSEMBLY FROM BOWL BY TURNING EYEWASH ASSEMBLY COUNTER CLOCKWISE.
2. SEPARATE 3/8" NPT NIPPLE. REMOVE PLASTIC FLOW CONTROL IN THE BOTTOM OF THE NIPPLE AND DISCARD.
3. CONNECT 3/8" NPT NIPPLE TO ADAPTER AND ASSEMBLE THE ADAPTER, NIPPLE, STEM SPACER, AND STRAINER AS SHOWN ABOVE.
4. CONNECT NIPPLE TO BOWL AND TIGHTEN ASSEMBLY USING WRENCH. USE SEALANT AS NECESSARY.
5. FLUSH SYSTEM TO REMOVE LINE DEBRIS PRIOR TO INSTALLING AXION PRODUCTS.
6. PLACE AXION EYEFACE WASH SHANK THROUGH DUST COVER LOOP AND CONNECT TO ADAPTER.
7. ORIENT TAB (SEE SHEET 6 OF 6) ON AXION EYEFACE WASH TOWARDS THE BACK (AWAY FROM USER). DO NOT OVER-TIGHTEN.
8. FULLY TEST UNIT AND CHECK FOR ANSI COMPLIANCE USING ENCLOSED CHECKLIST AFTER UPGRADING THE INSTALLATION.



1455 KLEPPE LANE  
SPARKS, NEVADA 89431  
(775) 359-4712 FAX (775) 359-7424  
E-MAIL: HAWS@HAWS.CO.COM  
WEBSITE: WWW.HAWS.CO.COM

ECN NO. REVISED PER: BT	MODEL(S)	PART NUMBER
4359	AX14 & AX14S	0002080248.D
DRYBACK	AXION® ADVANTAGE™	DRAWING NO.
APPROVED	SCALE: 1:125	16284A
DATE	DRAWING TYPE: INSTALLATION	REV
	SIZE: A	1
	SHEET: 4 OF 7	

## TO UPGRADE HAWS UNITS



### NOTE:

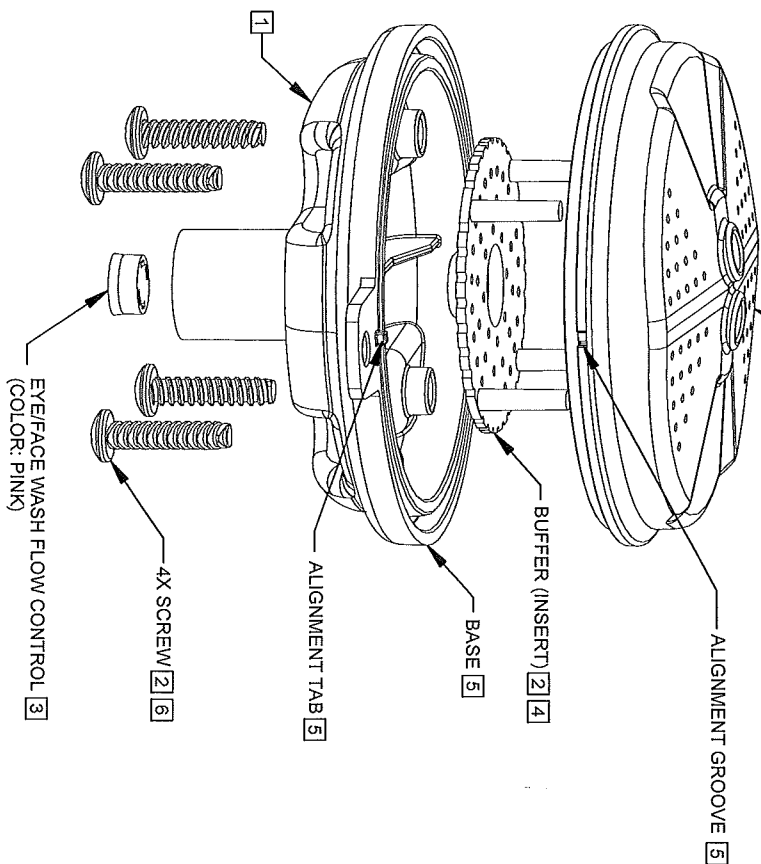
NOT FOR USE ON ANY FREEZE RESISTANT UNITS.  
\*NOTE CORRESPONDING LETTERS ON PARTS BREAKDOWN DRAWING.

### INSTALLATION INSTRUCTIONS:

1. REMOVE EXISTING HAWS EYEWASH ASSEMBLY FROM BOWL BY TURNING EYEWASH ASSEMBLY COUNTER CLOCKWISE. DO NOT REMOVE SUPPLY NIPPLE FROM BOWL HOLDER.
2. PLACE HAWS ADAPTER THROUGH DUST COVER LOOP. THREAD HAWS ADAPTER ONTO SUPPLY NIPPLE UNTIL SNUG AGAINST EXISTING STRAINER. USE SEALANT AS NECESSARY.
3. FLUSH SYSTEM TO REMOVE LINE DEBRIS PRIOR TO INSTALLING AXION PRODUCTS.
4. THREAD AXION EYE/FACE WASH ONTO ADAPTER. ORIENT TAB (SEE SHEET 6 OF 6) TOWARDS THE BACK (AWAY FROM THE USER). DO NOT OVER TIGHTEN.
5. PLACE DUST COVER ONTO EYE/FACE WASH.
6. SUPPLIED HAWS ADAPTER MAY NOT BE REQUIRED IN SOME APPLICATIONS.
7. FULLY TEST UNIT AND CHECK FOR ANSI COMPLIANCE USING ENCLOSED CHECKLIST AFTER UPGRADING THE INSTALLATION.

<b>Haws</b>		1455 KLEPPLE LANE SPARKS, NEVADA 89431 (775) 399-4712 FAX (775) 399-7424 E-MAIL: HAWS@HAWS.CO.COM WEBSITE: WWW.HAWS.CO.COM	
ECN NO. REVISED PER BY:	MODEL(S)	AX14 & AX14S	PART NUMBER
4839	DATE: 01/01/13	AXION® ADVANTAGE™	0002080248.D
DRAWN: J. WACK	SCALE: 1/2	DRAWING TYPE: INSTALLATION	DRAWING NO. 16284A
APPROVED: [Signature]	SIZE: A	SHEET: 5 OF 7	REV: 1

EYE/FACE WASH HEAD HAS 2 LARGE OPENINGS [2]  
(FOR EYES) AND MULTIPLE SMALLER OPENINGS  
(FOR FACEWASH)

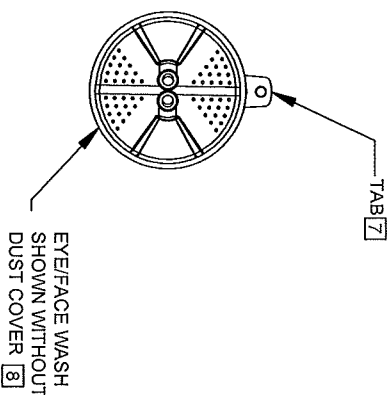


3 DETAIL A

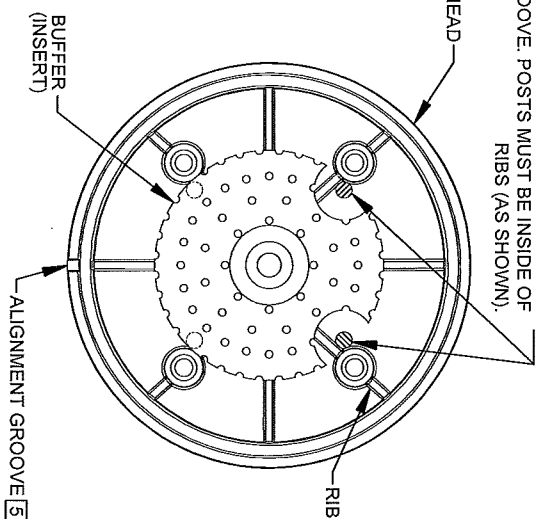
## AXION EYE/FACE WASH CLEANING DETAIL

### FLOW CONTROL CLEANING STEPS:

- 1 UNSCREW EYE/FACE WASH ASSEMBLY FROM ADAPTER (NOT SHOWN).
- 2 REMOVE SCREWS (QTY. 4) FROM EYE/FACE WASH ASSEMBLY.  
REMOVE EYE/FACE WASH HEAD AND BUFFER (INSERT).
- 3 REMOVE EXISTING FLOW CONTROL FROM BASE BY PUSHING IT OUT  
FROM THE TOP AND CAREFULLY REMOVE ANY DEBRIS LODGED BETWEEN  
O-RING AND HOUSING OR OPENINGS. ALSO, CHECK FOR ANY SEDIMENT  
OR MINERAL DEPOSITS BLOCKING OPENINGS. EXERCISE CAUTION NOT  
TO DAMAGE OR LOSE O-RING IN THE PROCESS. ALL OPENINGS ON FLOW  
CONTROL MUST BE FREE AND CLEAR OF ANY OBSTRUCTIONS FOR FLOW  
CONTROL TO FUNCTION PROPERLY. REINSTALL FLOW CONTROL. SEE  
DETAIL A FOR ORIENTATION.
- 4 INSERT BUFFER (INSERT) INTO EYE/FACE WASH HEAD  
NOTING ORIENTATION OF POST IN RELATIONSHIP TO ALIGNMENT  
GROOVE AS SHOWN ON DETAIL B.
- 5 REASSEMBLE EYE/FACE WASH HEAD, MAKING SURE THAT ALIGNMENT  
GROOVE ON EYE/FACE WASH HEAD LINES UP WITH ALIGNMENT TAB  
ON BASE.
- 6 REINSTALL SCREWS (QTY. 4) INTO THE EYE/FACE WASH ASSEMBLY. TIGHTEN SNUG  
TO ENSURE A WATERTIGHT SEAL. DO NOT OVER-TIGHTEN. TORQUE SPEC: 4 IN. LBS. MAX
- 7 REASSEMBLE EYE/FACE WASH ASSEMBLY ONTO ADAPTER (NOT SHOWN).  
ORIENT TAB TOWARDS THE BACK (AWAY FROM USER). DO NOT OVER-TIGHTEN.
- 8 PLACE DUST COVER (NOT SHOWN) ONTO EYE/FACE WASH.



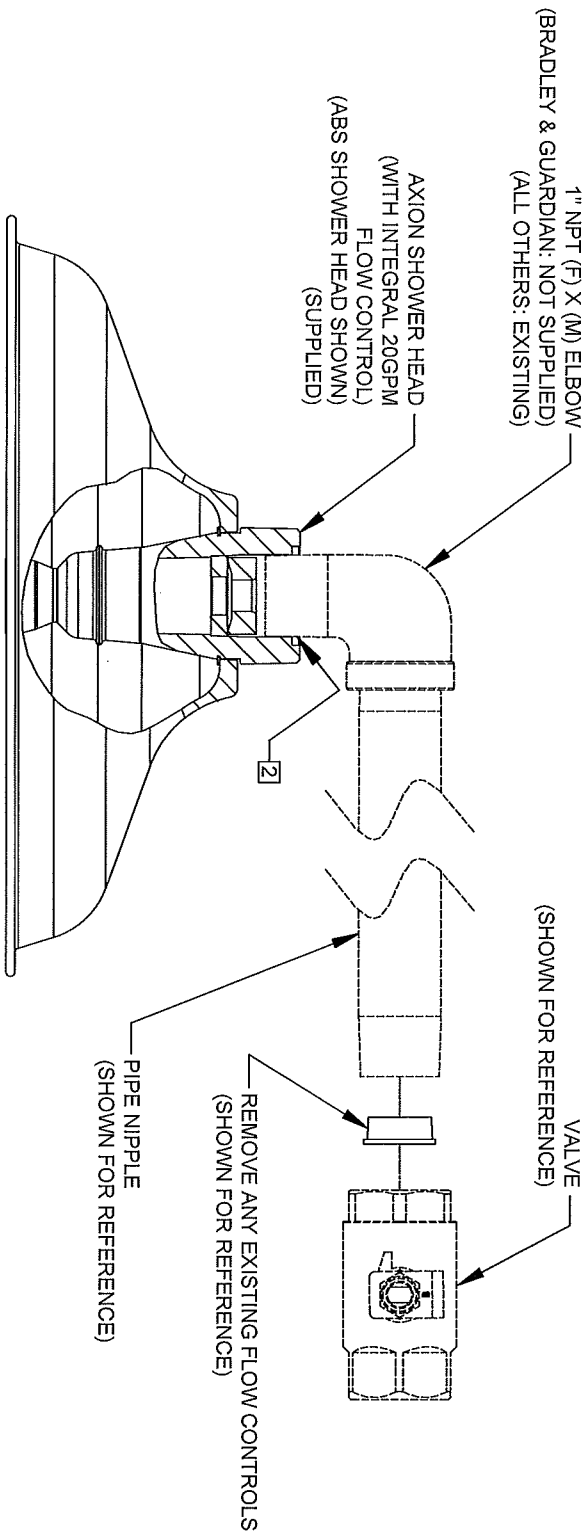
NOTE ORIENTATION OF POSTS IN  
RELATIONSHIP TO ALIGNMENT  
GROOVE. POSTS MUST BE INSIDE OF  
RIBS (AS SHOWN).



1455 KLEPPE LANE  
SPARKS, NEVADA 89431  
(775) 359-4712 FAX (775) 359-7424  
E-MAIL: HAWS@HAWS.CO.COM  
WEBSITE: WWW.HAWS.CO.COM

EDN NO. REVISED PER BY:	MODEL(S)	PART NUMBER
4838 EDN 4838 JHM	AX14 & AX14S	0002080248.D
DRAWN BY: J. HAWES	DATE: 12/15/11	DRAWING NO. 16284A
APPROVED: [Signature]	SCALE: 1:18	REV 1
	DRAWING TYPE: INSTALLATION	SIZE: A
		SHEET: 6 OF 7





NOTES:

1. TO COMPLY WITH ANSI Z358.1-2009 FOR EMERGENCY EYEWASH OR EYE/FACE WASH AND SHOWER EQUIPMENT:
  - UNIT SHALL BE INSTALLED IN ACCORDANCE WITH MANUFACTURER'S INSTRUCTIONS AND ACCEPTABLE PLUMBING PRACTICES.
  - SHOWER SHALL BE POSITIONED SO THAT SHOWER HEAD IS NOT LESS THAN 208.3 CM (82 IN.) NOR MORE THAN 243.8 CM (96 IN.) FROM SURFACE ON WHICH USER STANDS.
  - SHOWER SPRAY PATTERN SHALL HAVE A MINIMUM DIAMETER OF 50.8 CM (20 IN.) AT 152.4 CM (60 IN.) ABOVE SURFACE ON WHICH USER STANDS, AND CENTER OF SPRAY PATTERN SHALL BE LOCATED AT LEAST 40.6 CM (16 IN.) FROM ANY OBSTRUCTION.
2. DO NOT USE REGULAR PIPE SEALANT. IF NECESSARY USE DOW CORNING 832 SEALANT, PLACING 5 SMALL BEADS ON THE MALE THREADS, JUST ABOVE THE FIRST THREAD.



1455 KLEPPE LANE  
SPARKS, NEVADA 89431  
(775) 359-4712 FAX (775) 359-7424  
E-MAIL: HAWS@HAWS.CO.COM  
WEBSITE: WWW.HAWS.CO.COM

ECN NO. REVISED PER BY:	MODEL(S)	AX14 & AX14S	PART NUMBER
489	ECN:489		0002080248.D
DRAWING DATE: 10/23/13	AXION® ADVANTAGE™		DRAWING NO. 16284A
APPROVED: [Signature]	SCALE: 1:1/25	DRAWING TYPE: INSTALLATION	REV 1
		SIZE: A	SHEET 7 OF 7