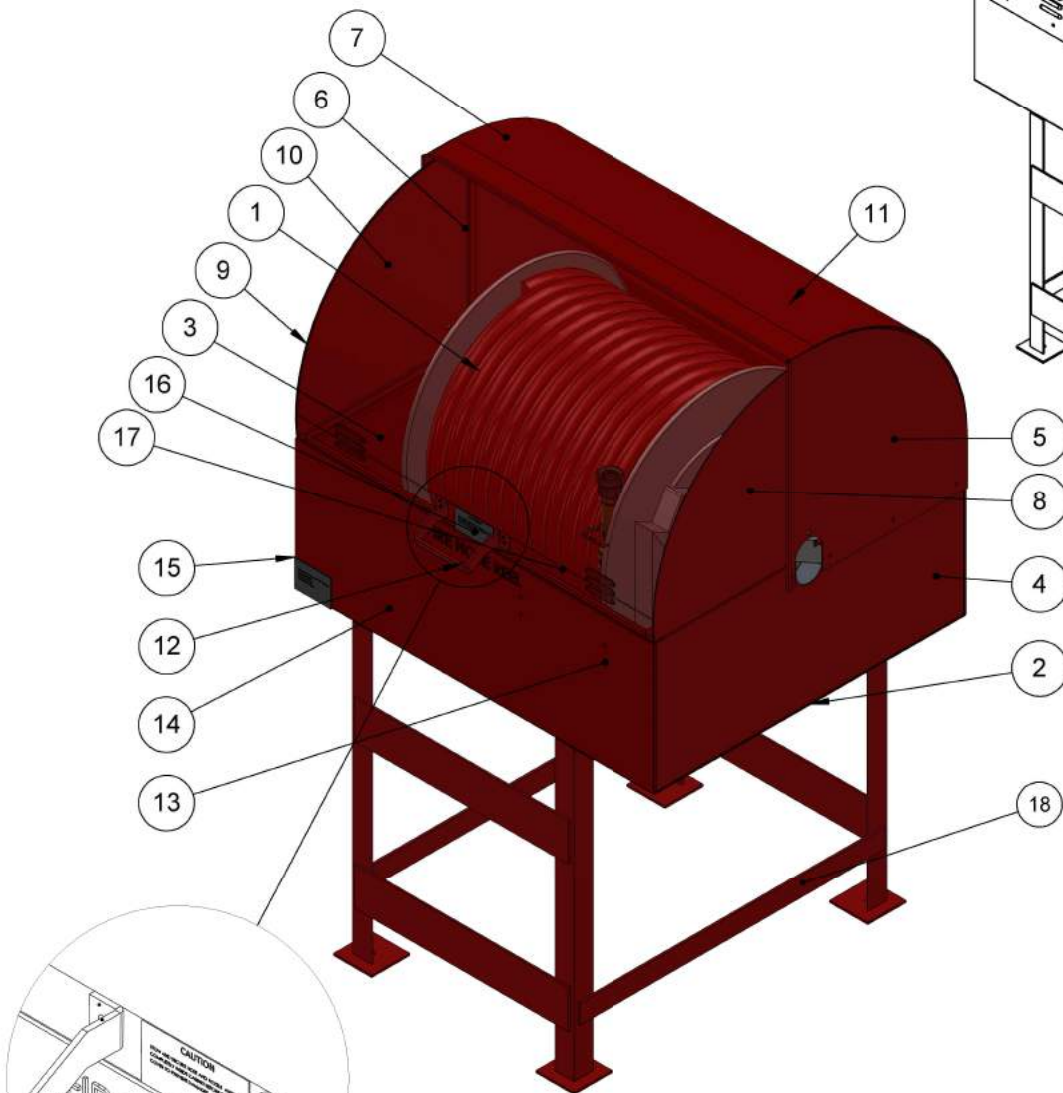


CAUTION

STOW AND SECURE HOSE AND NOZZLE ASSEMBLY COMPLETELY INSIDE CABINET BEFORE CLOSING COVER TO PREVENT DAMAGES

WARNING LABEL DETAILS

LOUVERS

BACK VIEW

PAINTING SPECIFICATIONS :

COAT	DESCRIPTION	SPECIFICATION	DFT
PRIMER	HEMPADUR	HEMPADUR MASTIC 45881	150
INTERMEDIATE	HEMPADUR	HEMPADUR MASTIC 45881	150
TOP COAT	HEMPATHANE	HEMPATHANE TOPCOAT 55210 (RAL 3000)	40

COATING / TREATMENT SPECIFICATIONS :

FBE	No	N/A
HDG	No	N/A

BOM Table

ITEM NO.	PART NUMBER	DESCRIPTION	QTY
1	FHC-400-125 SPL	HOSE REEL (COX REEL)	1
2	C403-B-001	CABINET BODY	1
3	C403-SC-003	FIXED HOOD SIDE COVERING	1
4	C403-SSC-002	CABINET SPOOL SIDE COVERING	1
5	C403-HSCS-004	FIXED HOOD SPOOL SIDE COVERING	1
6	C403-HSC-005	FIXED HOOD SIDE COVERING	1
7	C403-FH-006	FIXED HOOD	1
8	C403-RH-007	RETRACTABLE HOOD SIDE COVERING -1	1
9	C403-RH-008	RETRACTABLE HOOD SIDE COVERING-2	1
10	C403-RHC-009	RETRACTABLE HOOD	1
11	C403-SA-0010	STOPPER ANGLE	1
12	C403-H-0011	CABINET HANDLE	1
13	C403-CH-0012	CRANK HOLDER	2
14	C403-BB-0013	BASE BRACKET	1
15	C403-TP-0016	TAG PLATE	1
16	C403-VL-0018	WARNING LABEL	1
17	C403-PS-0014	SS PERFORATED SHEET (1.2mm.)	1
18	C403-S-0015	CABINET STAND	1

ACCESSORIES BOQ

PART NUMBER	DESCRIPTION	MANUFACTURER	QTY
FHC-400-125 SPL	COXREEL HOSE REEL	COXREEL	1
L-84	FIRE HOSE NON COLLAPSIBLE TYPE 125' LENTH X 1.5" DIA	GOODALL	1
SFL-GN-95-SPL	BRASS HANDLINE NOZZLE WITH PISTOL GRIP 1.5"	ELKHART	1

GENERAL NOTE:-

- ALL DIMENSIONS ARE IN MM. UNLESS OTHERWISE NOTED.
- COLOR RED RAL 3000 AS PER PAINTING SPECIFICATIONS
- ENTIRE CABINET IS FABRICATED OF CARBON STEEL SHEET 2.5 & 2 MM. THK. CARBON STEEL AS PER MATL. SPECS.
- CABINET MESH SHALL BE FABRICATED WITH 1.2MM THK SS SHEET.
- REAR SIDE OF THE CABINET IS EQUIPPED WITH VENTILATION LOUVERS.
- CABINET SHALL BE PAINTED AS PER ARAMCO STD APCS 26T.

FHC

FIRE AND HAZARD CONTROL EQUIPMENT CO.LTD.

Tel- 966 13 8126678 - Fax 966 13 8124134
P.O.Box 2923 Alkhobar 31952
Dammam II Industrial Area 69th Street (KSA)
Web Site : www.fhcmfg.com

TITLE	FIRE HOSE REEL STATION		
PART #	C403 CSSS-Default		
CLIENT	SAUDI ARAMCO		
PROJECT	---		
SCALE	N.T.S	SIGN	DATE
DRN	SHA	PO	QTY
CHKD.	SFN	WEIGHT (G.)	01 NOS.
APPD.	SREE	MATERIAL	Material <not specified>
QC CHKD.	FZ	SHEET NO	1 OF 2 REV 00
MNFR.	SK	FIRST ANGLE PROJ	---

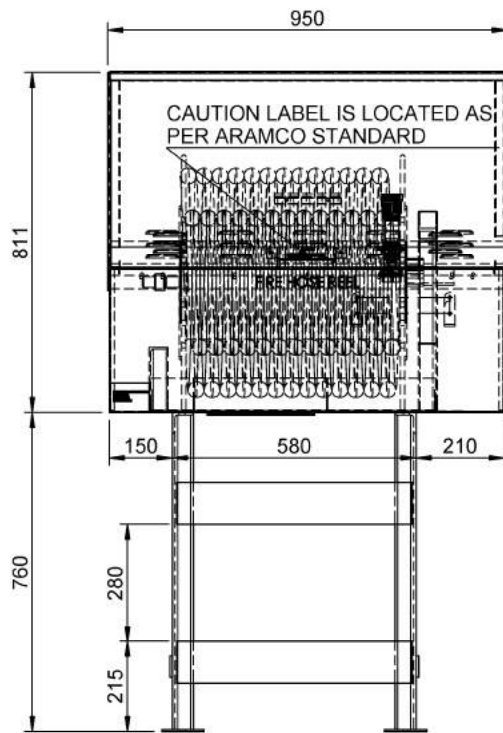
GENERAL TOLERANCES:
1) LINEAR DIMS : ± 2 MM.
2) ANGULAR DIMS : $90^{\circ} \pm 1^{\circ}$.

GENERAL SYMBOLS:
1) FOR OPENING

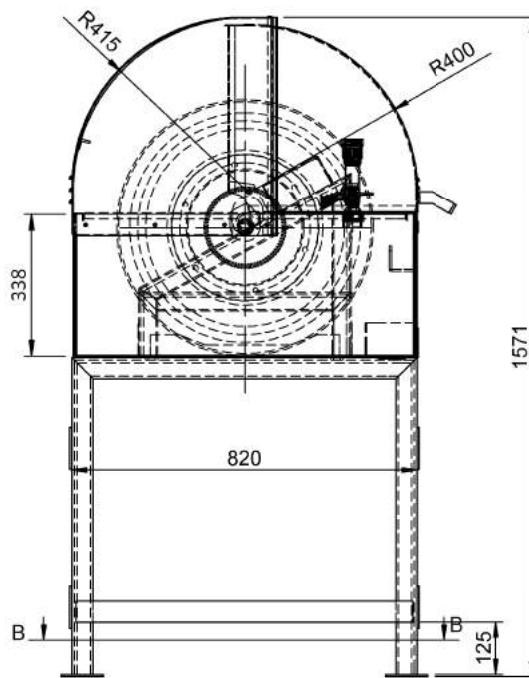
GENERAL NOTES :
1) ALL DIMENSION ARE IN MM. UNLESS SPECIFIED.
2) REMOVE SHARP CORNERS & EDGES.
3) DRAIN HOLES AT CABINET BOTTOM TO BE PROVIDED.

DETAIL WARNING LABEL

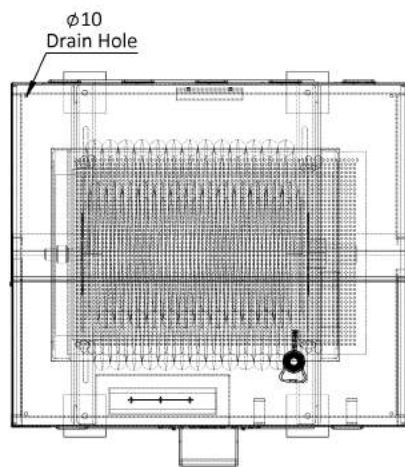
SCALE 1 : 5



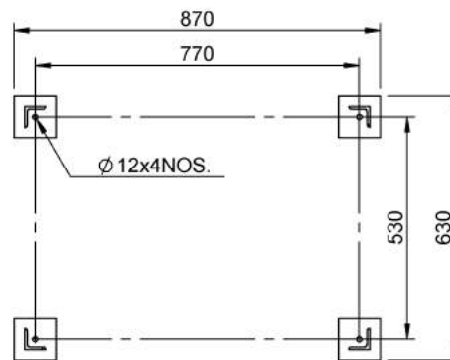
FRONT VIEW



SIDE VIEW



TOP VIEW



SECTION B-B
SCALE 1 : 18

GENERAL TOLERANCES:
1) LINEAR DIMS : ±2MM.
2) ANGULAR DIMS : 90°±1°.

GENERAL SYMBOLS:
1) FOR OPENING

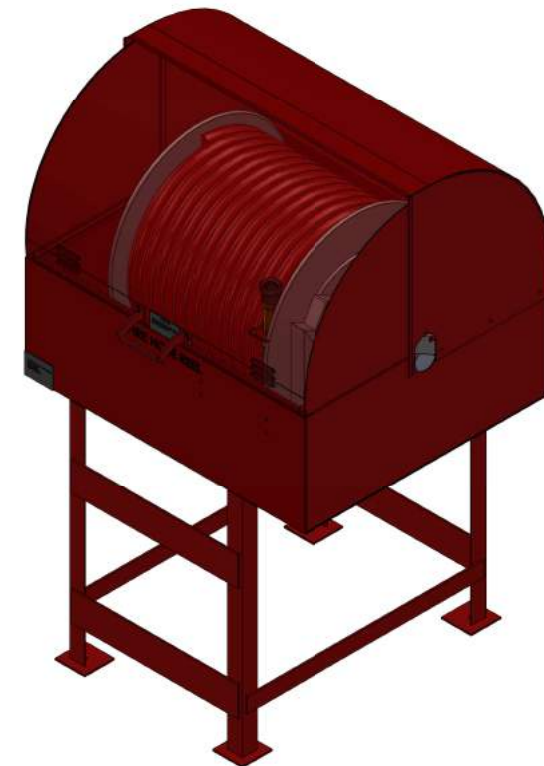
GENERAL NOTES :
1) ALL DIMENSION ARE IN MM. UNLESS SPECIFIED.
2) REMOVE SHARP CORNERS & EDGES.
3) DRAIN HOLES AT CABINET BOTTOM TO BE PROVIDED.

PAINTING SPECIFICATIONS :

COAT	DESCRIPTION	SPECIFICATION	DFT
PRIMER	HEMPADUR	HEMPADUR MASTIC 45881	150
INTERMEDIATE	HEMPADUR	HEMPADUR MASTIC 45881	150
TOP COAT	HEMPATHANE	HEMPATHANE TOPCOAT 55210 (RAL 3000)	40

COATING / TREATMENT SPECIFICATIONS :

FBE	No	N/A
HDG	No	N/A



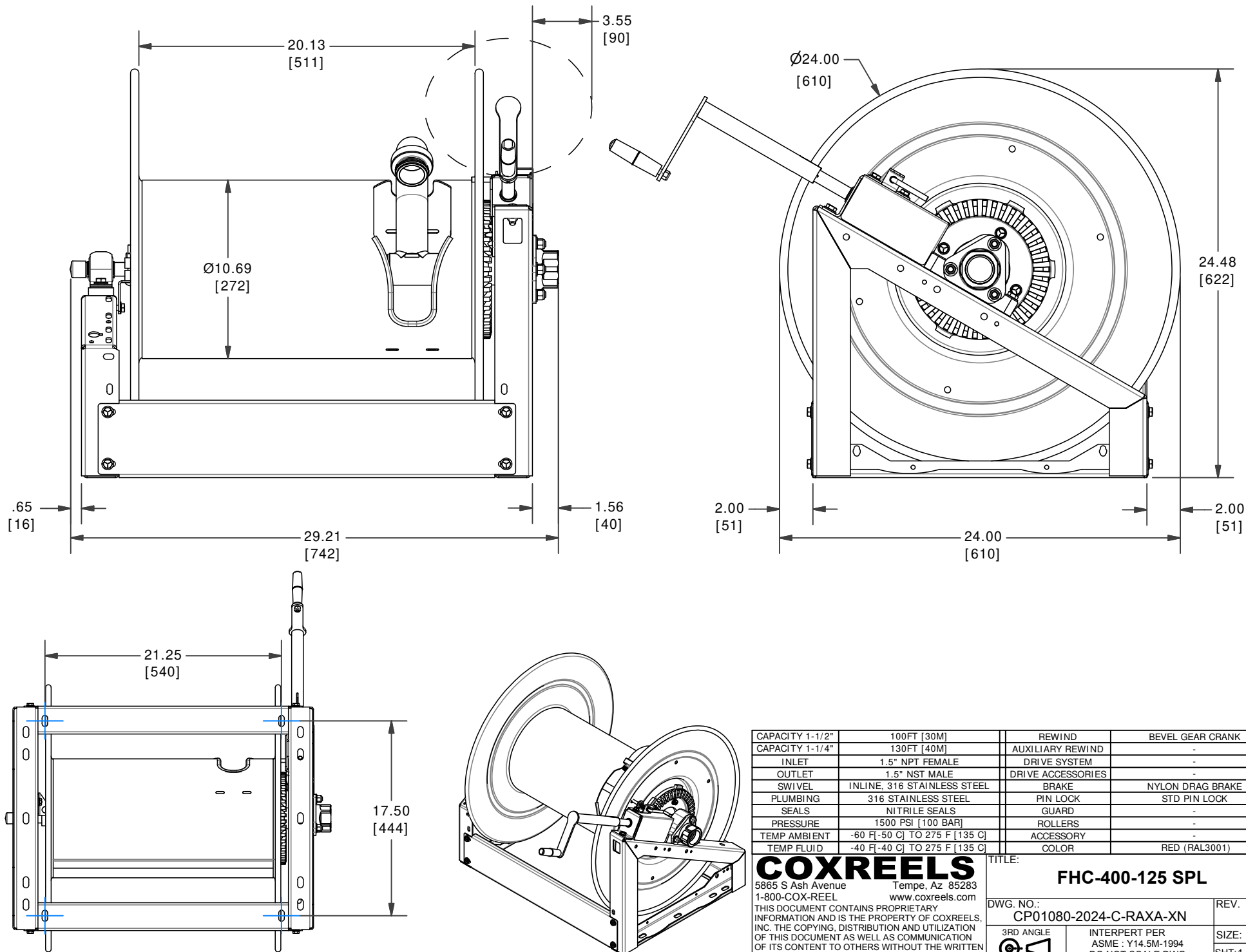
FHC

FIRE AND HAZARD CONTROL EQUIPMENT CO.LTD.

Tel- 966 13 8126678 - Fax 966 13 8124134
P.O.Box 2923 Alkhobar 31952
Dammam II Industrial Area 69th Street (KSA)
Web Site : www.fhcmfg.com

TITLE	FIRE HOSE REEL STATION		
PART #	C403.CSSS-Default		
CLIENT	SAUDI ARAMCO		
PROJECT	---	DWG. NO.	C403.CSSS
SCALE	N.T.S	SIGN	---
DRN	SHA	DATE	---
CHKD.	SFN	QTY	01 NOS.
APPD.	SREE	WEIGHT (G.)	---
QC CHKD.	FZ	MATERIAL	Material <not specified>
MNFR.	SK	SHEET NO	2 OF 2
		REV	00
		FIRST ANGLE PROJ	---
CAD FILE NAME / LOCATION: Z:\Manf\Engg\STD LIBRY\RED\AIHOSE REEL\FHRS\DWG\3D\R0			





CAPACITY 1-1/2"	100FT [30M]	REWIND	BEVEL GEAR CRANK
CAPACITY 1-1/4"	130FT [40M]	AUXILIARY REWIND	-
INLET	1.5" NPT FEMALE	DRIVE SYSTEM	-
OUTLET	1.5" NST MALE	DRIVE ACCESSORIES	-
SWIVEL	INLINE, 316 STAINLESS STEEL	BRAKE	NYLON DRAG BRAKE
PLUMBING	316 STAINLESS STEEL	PIN LOCK	STD PIN LOCK
SEALS	NITRILE SEALS	GUARD	-
PRESSURE	1500 PSI [100 BAR]	ROLLERS	-
TEMP AMBIENT	-60 F [-50 C] TO 275 F [135 C]	ACCESSORY	-
TEMP FLUID	-40 F [-40 C] TO 275 F [135 C]	COLOR	RED (RAL3001)

COXREELS
5865 S Ash Avenue
1-800-COX-REEL

Tempe, Az 85283
www.coxreels.com

THIS DOCUMENT CONTAINS PROPRIETARY INFORMATION AND IS THE PROPERTY OF COXREELS, INC. THE COPYING, DISTRIBUTION AND UTILIZATION OF THIS DOCUMENT AS WELL AS COMMUNICATION OF ITS CONTENT TO OTHERS WITHOUT THE WRITTEN AUTHORIZATION OF COXREELS, INC., IS PROHIBITED.

TITLE:
FHC-400-125 SPL

DWG. NO.:
CP01080-2024-C-RAXA-XN

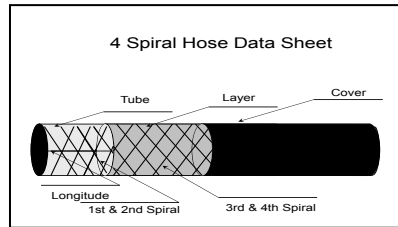
3RD ANGLE

INTERPERT PER
ASME : Y14.5M-1994
DO NOT SCALE DWG.

REV.
E

SIZE: **A**

SHT: 1 OF: 1



Saxon L84 - 300

General Information:

Part Number: L84 (300 psi)
 Supplier: LewisGoetz
 Description: Multipurpose Air/Water Discharge hose
 Intended Service: Multipurpose Air/Water Transfer*

Specification:

Id	Od	Working	Reinforcement	Min. Bend Radius
(inch)	(inch)	Pressure (psi)	Type	(inch)
1 1/4	1.75	300	4 Spiral	8.75

Additional Specifications:

Temperature Range*: -20F to +160 °F; 180°F Intermittent
 Oil Resistance: Class A for Tube & Cover
 Non-Conductivity: Non-conductive hose: 1,000,000 ohms minimum resistance at 1000 volts DC

Hose Design:

Tube: Extruded, High Grade, Nitrile
 Reinforcement: Four, High Tensile, Polyester Spirals
 Layer: Nitrile/PVC
 Cover: Weather, Abrasion & Ozone Resistant, Red Nitrile/PVC
 Branding: "Goodall L84 SAXON AIR 300
 PSI MAX WP MADE IN USA 10020

Recommended Couplings

Couplings: Refer to coupling manufacturer

* See note #2 of Additional notes (pg. #2)

Saxon L84 - 300

Features & Benefits

Features	Benefits
Manufacturer	Highest Quality standards that insure a safe, consistent & dependable product.
Design	Light weight for ease of handling. Excellent pressure to hose weight ratio.
Red, Nitrile / PVC Cover	Excellent Weather Resistance

Additional Notes:

1. The user is advised that L84 is designed to transfer air and some liquids (see note #2). The use of this hose for any other purpose without prior approval in writing by Goodall Rubber Company of Canada (GRC) / LewisGoetz voids all warranties either expressed or implied.
2. For any other products to be transferred, refer to Industry Chemical resistance charts to insure compatibility of product transferred and service conditions, including temperature, concentration and pressure **before** using. Contact LewisGoetz for any questions. The use of this hose for any other purpose without prior approval in writing by LewisGoetz voids all warranties either expressed or implied.
3. **Refer To RMA's Handbook, NAHAD and other industry information for recommendations concerning care and maintenance of steam hose. Serious personal injury and/or property damage can occur if product is misused or abused.**
4. As a result of Lewis-Goetz and Company's continuous effort towards product improvement, LewisGoetz reserves the right to make product improvements without prior notification.
5. The bend radius listed is intended to be used solely as a guide. Because there are a variety of factors that impact the bend radius of a discharge hose, the end user is advised to insure the hose is not kinked in service.
6. To maximize service life drain hose after every use. Hose should be inspected prior to each use and periodically hydrostatically tested.
7. Failure to perform proper and consistent care and maintenance procedures (see note #3) could result in serious personal injury and/or property damage.
8. If interlocking clamps are used, tighten clamps per manufacturer's recommended torque and frequency.
9. Any hose should be immediately removed from service if any section of the reinforcement under the cover is exposed or visible.
10. Use all appropriate safety equipment when using this hose.
11. LewisGoetz and Goodall Rubber Co. of Canada ULC are exclusive distributors of Goodall branded products.
12. This information is proprietary to LewisGoetz. **It has been provided for the sole use of its customers and direct employees.**



MARINE

Marine

These handline nozzles are specifically designed and manufactured for the unique firefighting challenges of a marine environment. They utilize military spec, corrosion resistant cast brass construction and are ideal for the application of AFFF. The constant flow technology, combined with their durable construction, make them optimal for use in the shipping industry, in refineries and for off-shore drilling or production rigs, as well as within chemical complexes.

Most models meet the stringent performance requirements of the U.S. Navy.



British Standard Parallel Pipe (BSPP) and British Instantaneous (BS336) base options available.

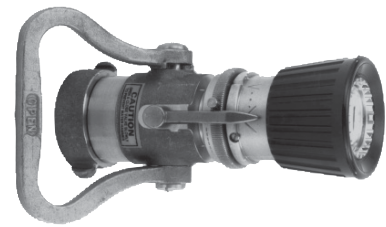
Base Size	AVAILABLE FLOW RATE GPM (LPM)			SHUT-OFF	BASE		TEETH	RATING			DIMENSIONS		MODEL	
	95 (360)	125 (473)	250 (946)		Rigid	Swivel		Free Swivel	Complies with MIL *	Complies with USCG **	FM Approved	Length (Inches)		Weight (Lbs.)
PSI (BAR) 100 (6.89)	Ball				Cut Metal									
1.5"	•	•		•			s	s				7.375	6.50	SFL-N
	•			•			s	s	•	•		8.06	6.92	SFL-CG-95
1.5"	•			•			s	s	•			7.375	7.625	SFL-GN-95
		•		•			s	s	•			7.375	7.625	SFL-GN-125
	•			•			s	s		•		8.31	8.17	SFL-GN-95-SPL
	•			•			s	s	•	•		8.31	8.25	SFL-GCG-95
2.5"			•	•			s	s	•			12.5	13.5	DSF-N

Key s = standard o = option

* Complies with MIL-N-24408E Type 1

** Complies with USCG Approval Number: 162.027/12/0-IAW CFR46 162.027

MARINE NOZZLES



MARINE NOZZLE with PISTOL GRIP



DSF-N



Figures depict general product types only and are not intended to be inclusive of all product features.

OPTIONS

THREADS

All nozzles are NHT unless otherwise specified. See index T-13 for optional base threads, including British instantaneous.

HANDLES

- SFL-N feature manganese/bronze shut-off handles
- SFL-CG-95, SFL-GCG-95, SFL-GN series, and DSF-N feature silicon/bronze shut-off handles